

## Product datasheet for PH302828

### PAM16 (NM\_016069) Human Mass Spec Standard

#### Product data:

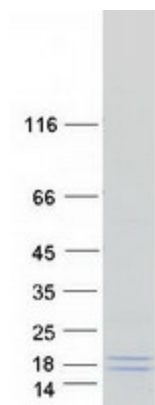
Product Type:	Mass Spec Standards
Description:	TIMM16 MS Standard C13 and N15-labeled recombinant protein (NP_057153)
Species:	Human
Expression Host:	HEK293
Expression cDNA Clone or AA Sequence:	RC202828
Predicted MW:	13.8 kDa
Protein Sequence:	>RC202828 protein sequence Red=Cloning site Green=Tags(s)  MAKYLAQIIVMGVQVVGRAFARALRQEF AASRAAADARGRAGHRSAASNL SGLSLQEAQQILNVSKLSP EEVQKNYEHLFKVNDKSVGGSFY LQSKVVRAKERLDEELKIQAQEDREKGQMPHT  TRTRPLEQKLISEEDLAANDILDYKDDDDKV
Tag:	C-Myc/DDK
Purity:	> 80% as determined by SDS-PAGE and Coomassie blue staining
Concentration:	>0.05 µg/µL as determined by microplate BCA method
Labeling Method:	Labeled with [U- 13C6, 15N4]-L-Arginine and [U- 13C6, 15N2]-L-Lysine
Buffer:	25 mM Tris-HCl, 100 mM glycine, pH 7.3
Storage:	Store at -80°C. Avoid repeated freeze-thaw cycles.
Stability:	Stable for 3 months from receipt of products under proper storage and handling conditions.
RefSeq:	<a href="#">NP_057153</a>
RefSeq Size:	600
RefSeq ORF:	375
Synonyms:	CGI-136; MAGMAS; SMDMDM; TIM16; TIMM16
Locus ID:	51025
UniProt ID:	<a href="#">Q9Y3D7</a>
Cytogenetics:	16p13.3



[View online »](#)

**Summary:**

This gene encodes a mitochondrial protein involved in granulocyte-macrophage colony-stimulating factor (GM-CSF) signaling. This protein also plays a role in the import of nuclear-encoded mitochondrial proteins into the mitochondrial matrix and may be important in reactive oxygen species (ROS) homeostasis. Mutations in this gene cause Megarbane-Dagher-Melike type spondylometaphyseal dysplasia, an early lethal skeletal dysplasia characterized by short stature, developmental delay and other skeletal abnormalities. [provided by RefSeq, May 2017]

**Product images:**

Coomassie blue staining of purified PAM16 protein (Cat# [TP302828]). The protein was produced from HEK293T cells transfected with PAM16 cDNA clone (Cat# [RC202828]) using MegaTran 2.0 (Cat# [TT210002]).