

Product datasheet for PH302826

UBC6e (UBE2J1) (NM_016021) Human Mass Spec Standard

Product data:

Product Type:	Mass Spec Standards
Description:	UBE2J1 MS Standard C13 and N15-labeled recombinant protein (NP_057105)
Species:	Human
Expression Host:	HEK293
Expression cDNA Clone or AA Sequence:	RC202826
Predicted MW:	35 kDa
Protein Sequence:	>RC202826 representing NM_016021 Red=Cloning site Green=Tags(s) METRYNLKSPAVKRLMKEAAELKDPTDHYHAQPLEDNLFEWHFTVRGPPDSDFDGGVYHGRIVLPPEYPM KPPSIILLTANGRFEVGGKICLSISGHPETWQPSWSIRTALLAIIGFMPKGEAIGSLDYTPERRAL AKKSQDFCCEGCGSAMKDVLLPLKSGSDSSQADQEAKELARQISFKAEVNSSGKTISESDLNHSFSLTDL QDDIPTTFQGATASTSYGVQNSSAASFHQPTQPVAKNTSMSPRQRRQQSQRRRLSTSPDVIQGHQPRDN HTDHGGS AVLIVILTLALAALIFRRIYLANEYIFDFEL TRTRPLEQKLI SEEDLAANDILDYKDDDDKV
Tag:	C-Myc/DDK
Purity:	> 80% as determined by SDS-PAGE and Coomassie blue staining
Concentration:	>0.05 µg/µL as determined by microplate BCA method
Labeling Method:	Labeled with [U- 13C6, 15N4]-L-Arginine and [U- 13C6, 15N2]-L-Lysine
Buffer:	25 mM Tris-HCl, 100 mM glycine, pH 7.3
Storage:	Store at -80°C. Avoid repeated freeze-thaw cycles.
Stability:	Stable for 3 months from receipt of products under proper storage and handling conditions.
RefSeq:	NP_057105
RefSeq Size:	4360
RefSeq ORF:	954
Synonyms:	CGI-76; HSPC153; HSPC205; HSU93243; NCUBE-1; NCUBE1; UBC6; UBC6E; Ubc6p
Locus ID:	51465



[View online »](#)

UniProt ID: [Q9Y385](#)

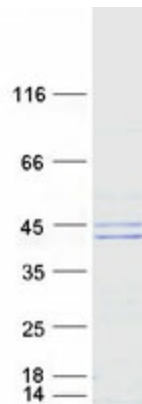
Cytogenetics: 6q15

Summary: The modification of proteins with ubiquitin is an important cellular mechanism for targeting abnormal or short-lived proteins for degradation. Ubiquitination involves at least three classes of enzymes: ubiquitin-activating enzymes, or E1s, ubiquitin-conjugating enzymes, or E2s, and ubiquitin-protein ligases, or E3s. This gene encodes a member of the E2 ubiquitin-conjugating enzyme family. This enzyme is located in the membrane of the endoplasmic reticulum (ER) and may contribute to quality control ER-associated degradation by the ubiquitin-proteasome system. [provided by RefSeq, Jul 2008]

Protein Families: Transmembrane

Protein Pathways: Parkinson's disease, Ubiquitin mediated proteolysis

Product images:



Coomassie blue staining of purified UBE2J1 protein (Cat# [TP302826]). The protein was produced from HEK293T cells transfected with UBE2J1 cDNA clone (Cat# [RC202826]) using MegaTran 2.0 (Cat# [TT210002]).