

## Product datasheet for PH302804

### Centrin 3 (CETN3) (NM\_004365) Human Mass Spec Standard

#### Product data:

Product Type:	Mass Spec Standards
Description:	CETN3 MS Standard C13 and N15-labeled recombinant protein (NP_004356)
Species:	Human
Expression Host:	HEK293
Expression cDNA Clone or AA Sequence:	RC202804
Predicted MW:	19.6 kDa
Protein Sequence:	>RC202804 protein sequence Red=Cloning site Green=Tags(s)  MSLALRSELVVDKTKRKRRELSEEQKQEKDAFELFDTDKDEAIDYHELKVAMRALGFDVKKADVLIKIL KDYDREATGKITFEDFNEVVTDWILERPHEEILKAFKLFDDDDSGKISLRNLRVARELGENMSDEELR AMIEEFDKGDGEINQEEFIAIMTGDI  TRTRPLEQKLISEEDLAANDILDYKDDDDKV
Tag:	C-Myc/DDK
Purity:	> 80% as determined by SDS-PAGE and Coomassie blue staining
Concentration:	>0.05 µg/µL as determined by microplate BCA method
Labeling Method:	Labeled with [U- 13C6, 15N4]-L-Arginine and [U- 13C6, 15N2]-L-Lysine
Buffer:	25 mM Tris-HCl, 100 mM glycine, pH 7.3
Storage:	Store at -80°C. Avoid repeated freeze-thaw cycles.
Stability:	Stable for 3 months from receipt of products under proper storage and handling conditions.
RefSeq:	<a href="#">NP_004356</a>
RefSeq Size:	1374
RefSeq ORF:	501
Synonyms:	CDC31; CEN3
Locus ID:	1070
UniProt ID:	<a href="#">O15182</a>



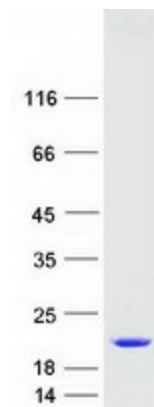
[View online »](#)

**Cytogenetics:** 5q14.3

**Summary:** The protein encoded by this gene contains four EF-hand calcium binding domains, and is a member of the centrin protein family. Centrins are evolutionarily conserved proteins similar to the CDC31 protein of *S. cerevisiae*. Yeast CDC31 is located at the centrosome of interphase and mitotic cells, where it plays a fundamental role in centrosome duplication and separation. Multiple forms of the proteins similar to the yeast centrin have been identified in human and other mammalian cells, some of which have been shown to be associated with centrosome fractions. This protein appears to be one of the most abundant centrins associated with centrosome, which suggests a similar function to its yeast counterpart. Alternatively spliced transcript variants encoding different isoforms have been found for this gene. [provided by RefSeq, Jul 2014]

**Protein Families:** Druggable Genome

### Product images:



Coomassie blue staining of purified CETN3 protein (Cat# [TP302804]). The protein was produced from HEK293T cells transfected with CETN3 cDNA clone (Cat# [RC202804]) using MegaTran 2.0 (Cat# [TT210002]).