

## Product datasheet for PH302799

### C4BPB (NM\_001017365) Human Mass Spec Standard

#### Product data:

Product Type:	Mass Spec Standards
Description:	C4BPB MS Standard C13 and N15-labeled recombinant protein (NP_001017365)
Species:	Human
Expression Host:	HEK293
Expression cDNA Clone or AA Sequence:	RC202799
Predicted MW:	28.3 kDa
Protein Sequence:	>RC202799 protein sequence Red=Cloning site Green=Tags(s)  MFFWCACCLMVAWRVVSASDEHCPELPPVDNSIFVAKEVEGQILGTYYVICIKGYHLVGKKTLCNASKEWDN TTTECRLGHCPDPVLVNGEFSSSGPVNVSDKITFMCNDHYILKGSNRSQCLEDHTWAPPFPICKSRDCDP PGNPVHGYPFEGNNFTLGSTISYYCEDRYLVGVQEQQCVDGEWSSALPVCKLIQEAPKPECEKALLAFQE SKNLCEAMENFMQQLKESGMTMEELKYSLELKKAEKAKLL  TRTRPLEQKLI SEEDLAANDILDYKDDDDKV
Tag:	C-Myc/DDK
Purity:	> 80% as determined by SDS-PAGE and Coomassie blue staining
Concentration:	>0.05 µg/µL as determined by microplate BCA method
Labeling Method:	Labeled with [U- <sup>13</sup> C <sub>6</sub> , <sup>15</sup> N <sub>4</sub> ]-L-Arginine and [U- <sup>13</sup> C <sub>6</sub> , <sup>15</sup> N <sub>2</sub> ]-L-Lysine
Buffer:	25 mM Tris-HCl, 100 mM glycine, pH 7.3
Storage:	Store at -80°C. Avoid repeated freeze-thaw cycles.
Stability:	Stable for 3 months from receipt of products under proper storage and handling conditions.
RefSeq:	<a href="#">NP_001017365</a>
RefSeq Size:	968
RefSeq ORF:	459
Synonyms:	C4BP
Locus ID:	725
UniProt ID:	<a href="#">P20851</a>



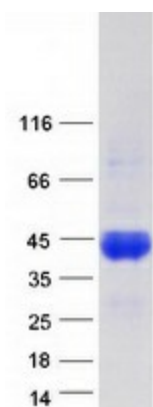
[View online »](#)

Cytogenetics: 1q32.1

**Summary:** This gene encodes a member of a superfamily of proteins composed predominantly of tandemly arrayed short consensus repeats of approximately 60 amino acids. A single, unique beta-chain encoded by this gene assembles with seven identical alpha-chains into the predominant isoform of C4b-binding protein, a multimeric protein that controls activation of the complement cascade through the classical pathway. C4b-binding protein has a regulatory role in the coagulation system also, mediated through the beta-chain binding of protein S, a vitamin K-dependent protein that serves as a cofactor of activated protein C. The genes encoding both alpha and beta chains are located adjacent to each other on human chromosome 1 in the regulator of complement activation gene cluster. Alternative splicing gives rise to multiple transcript variants. [provided by RefSeq, Jul 2008]

**Protein Pathways:** Complement and coagulation cascades

### Product images:



Coomassie blue staining of purified C4BPB protein (Cat# [TP302799]). The protein was produced from HEK293T cells transfected with C4BPB cDNA clone (Cat# [RC202799]) using MegaTran 2.0 (Cat# [TT210002]).