

Product datasheet for PH302793

LSM3 (NM_014463) Human Mass Spec Standard

Product data:

Product Type:	Mass Spec Standards
Description:	LSM3 MS Standard C13 and N15-labeled recombinant protein (NP_055278)
Species:	Human
Expression Host:	HEK293
Expression cDNA Clone or AA Sequence:	RC202793
Predicted MW:	11.8 kDa
Protein Sequence:	>RC202793 protein sequence Red =Cloning site Green =Tags(s) MADDVDQQQTNTVVEPLDLIRLSLDERIYVKMRNDRELGRGLHAYDQHLNMILGDVEETVTTIEIDEET YEEIYKSTKRNIPMLFVRGDGVVLVAPPLRVG TRTRPLEQKLISEEDLAANDILDYKDDDDKV
Tag:	C-Myc/DDK
Purity:	> 80% as determined by SDS-PAGE and Coomassie blue staining
Concentration:	>0.05 µg/µL as determined by microplate BCA method
Labeling Method:	Labeled with [U- ¹³ C ₆ , ¹⁵ N ₄]-L-Arginine and [U- ¹³ C ₆ , ¹⁵ N ₂]-L-Lysine
Buffer:	25 mM Tris-HCl, 100 mM glycine, pH 7.3
Storage:	Store at -80°C. Avoid repeated freeze-thaw cycles.
Stability:	Stable for 3 months from receipt of products under proper storage and handling conditions.
RefSeq:	NP_055278
RefSeq Size:	695
RefSeq ORF:	306
Synonyms:	SMX4; USS2; YLR438C
Locus ID:	27258
UniProt ID:	P62310
Cytogenetics:	3p25.1



[View online »](#)

Summary:

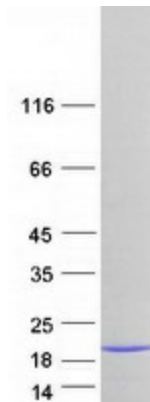
Sm-like proteins were identified in a variety of organisms based on sequence homology with the Sm protein family (see SNRPD2; MIM 601061). Sm-like proteins contain the Sm sequence motif, which consists of 2 regions separated by a linker of variable length that folds as a loop. The Sm-like proteins are thought to form a stable heteromer present in tri-snRNP particles, which are important for pre-mRNA splicing.[supplied by OMIM, Apr 2004]

Protein Families:

Stem cell - Pluripotency

Protein Pathways:

RNA degradation, Spliceosome

Product images:

Coomassie blue staining of purified LSM3 protein (Cat# [TP302793]). The protein was produced from HEK293T cells transfected with LSM3 cDNA clone (Cat# [RC202793]) using MegaTran 2.0 (Cat# [TT210002]).