

Product datasheet for PH302791

Renalase (RNLS) (NM_001031709) Human Mass Spec Standard

Product data:

Product Type:	Mass Spec Standards
Description:	RNLS MS Standard C13 and N15-labeled recombinant protein (NP_001026879)
Species:	Human
Expression Host:	HEK293
Expression cDNA Clone or AA Sequence:	RC202791
Predicted MW:	37.8 kDa
Protein Sequence:	>RC202791 protein sequence Red=Cloning site Green=Tags(s)

MAQVLIVGAGMTGSLCAALLRRQTSGLPLYLAVWDKADDSGGRMTTACSPHNPQCTADLGAQYITCTPHYA
KKHQRFYDELLAYGVLRLPLSSPIEGMVMKEGDCNFVAPQGISSIIKHYLKESGAEVYFRHRVTQINLRDD
KWEVSKQTGSPEQFDLIVLTMPVPEILQLQGDITTLISECQRQLEAVSYSSRYALGLFYEAGTKIDVWP
AGQYITSNPCIRFVSIDNKKRNIESSEIGPSLVIHTTVPFVGTYLEHSIEDVQELVFQLENILPGLPQP
IATKCKWRHSQVTNAAANCPGQMTLHHKPFLACGGDGFQSNFDGCITSALCVLEALKNYI

TRTRPLEQKLISEEDLAANDILDYKDDDDKV

Tag:	C-Myc/DDK
Purity:	> 80% as determined by SDS-PAGE and Coomassie blue staining
Concentration:	>0.05 µg/µL as determined by microplate BCA method
Labeling Method:	Labeled with [U- ¹³ C ₆ , ¹⁵ N ₄]-L-Arginine and [U- ¹³ C ₆ , ¹⁵ N ₂]-L-Lysine
Buffer:	25 mM Tris-HCl, 100 mM glycine, pH 7.3
Storage:	Store at -80°C. Avoid repeated freeze-thaw cycles.
Stability:	Stable for 3 months from receipt of products under proper storage and handling conditions.
RefSeq:	<u>NP_001026879</u>
RefSeq Size:	2420
RefSeq ORF:	1026
Synonyms:	C10orf59; RENALASE
Locus ID:	55328



[View online »](#)

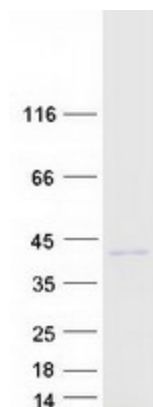
UniProt ID: [Q5VYX0](#)

Cytogenetics: 10q23.31

Summary: Renalase is a flavin adenine dinucleotide-dependent amine oxidase that is secreted into the blood from the kidney (Xu et al., 2005 [PubMed 15841207]).[supplied by OMIM, Mar 2008]

Protein Families: Secreted Protein

Product images:



Coomassie blue staining of purified RNLS protein (Cat# [TP302791]). The protein was produced from HEK293T cells transfected with RNLS cDNA clone (Cat# [RC202791]) using MegaTran 2.0 (Cat# [TT210002]).