

## Product datasheet for PH302786

### PSMA4 (NM\_002789) Human Mass Spec Standard

#### Product data:

Product Type:	Mass Spec Standards
Description:	PSMA4 MS Standard C13 and N15-labeled recombinant protein (NP_002780)
Species:	Human
Expression Host:	HEK293
Expression cDNA Clone or AA Sequence:	RC202786
Predicted MW:	29.5 kDa
Protein Sequence:	>RC202786 protein sequence Red=Cloning site Green=Tags(s)  MSRRYDSRTTIFSPGRLYQVEYAMEAIGHAGTCLGILANDGVLLAERRNIHKLLDEVFFSEKIYKLNEDMACSVAGITSDANVLTNELRLIAQRYLLQYQEPICEQLVTALCDIKQAYTQFGGKRPFVGSLLYIGWDKHYGFQLYQSDPSGNYGGWKATCIGNNSAAAVSMLKQDYKEGEMTLKSALALAIKVLNKTMDVSKLSAEKVEIATLTRENGKTIVIRVLKQKEVEQLIKKHEEEEEAKAEREKKEKEQKEKDK  TRTRPLEQKLISEEDLAANDILDYKDDDDKV
Tag:	C-Myc/DDK
Purity:	> 80% as determined by SDS-PAGE and Coomassie blue staining
Concentration:	>0.05 µg/µL as determined by microplate BCA method
Labeling Method:	Labeled with [U- <sup>13</sup> C <sub>6</sub> , <sup>15</sup> N <sub>4</sub> ]-L-Arginine and [U- <sup>13</sup> C <sub>6</sub> , <sup>15</sup> N <sub>2</sub> ]-L-Lysine
Buffer:	25 mM Tris-HCl, 100 mM glycine, pH 7.3
Storage:	Store at -80°C. Avoid repeated freeze-thaw cycles.
Stability:	Stable for 3 months from receipt of products under proper storage and handling conditions.
RefSeq:	<a href="#">NP_002780</a>
RefSeq Size:	1235
RefSeq ORF:	783
Synonyms:	HC9; HsT17706; PSC9
Locus ID:	5685
UniProt ID:	<a href="#">P25789</a>



[View online »](#)

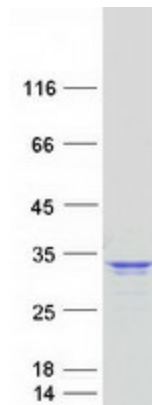
Cytogenetics: 15q25.1

**Summary:** This gene encodes a core alpha subunit of the 20S proteasome, which is a highly ordered ring-shaped structure composed of four rings of 28 non-identical subunits. Proteasomes cleave peptides in an ATP- and ubiquitin-dependent manner. [provided by RefSeq, Aug 2016]

**Protein Families:** Druggable Genome, Protease

**Protein Pathways:** Proteasome

### Product images:



Coomassie blue staining of purified PSMA4 protein (Cat# [TP302786]). The protein was produced from HEK293T cells transfected with PSMA4 cDNA clone (Cat# [RC202786]) using MegaTran 2.0 (Cat# [TT210002]).