

Product datasheet for PH302775

SULT1C2 (NM_001056) Human Mass Spec Standard

Product data:

Product Type:	Mass Spec Standards
Description:	SULT1C2 MS Standard C13 and N15-labeled recombinant protein (NP_001047)
Species:	Human
Expression Host:	HEK293
Expression cDNA Clone or AA Sequence:	RC202775
Predicted MW:	34.9 kDa
Protein Sequence:	>RC202775 protein sequence Red=Cloning site Green=Tags(s) MALTSDLGKQIKLKEVEGTLQPATVDNWSQIQSFEAKPDDLICTYPKAGTTWIQEIVDMIEQNGDVEK CQRAIIQHRHPFIEWARPPQPSGVEKAKAMPSPRILKTHLSTQLLPSPFWENNCKFLYVARNAKDCMVS YHFQRMNHMLPDPGTWEEYFETFINGKVWGSWFDHVKGWEMKDRHQILFLFYEDIKRDPKHEIRKVMQ FMGKKVDETVLDKIVQETSFEKMKENPMTNRSTVSKSILDQSISSFMRKGTVDGWNHFTVAQNERFDEI YRRKMEGTSINFCMEL TRTRPLEQKLISEEDLAANDILDYKDDDDKV
Tag:	C-Myc/DDK
Purity:	> 80% as determined by SDS-PAGE and Coomassie blue staining
Concentration:	>0.05 µg/µL as determined by microplate BCA method
Labeling Method:	Labeled with [U- ¹³ C ₆ , ¹⁵ N ₄]-L-Arginine and [U- ¹³ C ₆ , ¹⁵ N ₂]-L-Lysine
Buffer:	25 mM Tris-HCl, 100 mM glycine, pH 7.3
Storage:	Store at -80°C. Avoid repeated freeze-thaw cycles.
Stability:	Stable for 3 months from receipt of products under proper storage and handling conditions.
RefSeq:	<u>NP_001047</u>
RefSeq Size:	2799
RefSeq ORF:	888
Synonyms:	humSULTC2; ST1C1; ST1C2; SULT1C1
Locus ID:	6819



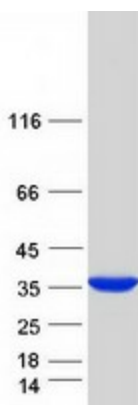
[View online »](#)

UniProt ID: [O00338](#)

Cytogenetics: 2q12.3

Summary: Sulfotransferase enzymes catalyze the sulfate conjugation of many hormones, neurotransmitters, drugs, and xenobiotic compounds. These cytosolic enzymes are different in their tissue distributions and substrate specificities. The gene structure (number and length of exons) is similar among family members. This gene encodes a protein that belongs to the SULT1 subfamily, responsible for transferring a sulfo moiety from PAPS to phenol-containing compounds. Two alternatively spliced transcript variants encoding different isoforms have been described for this gene. [provided by RefSeq, Jul 2008]

Product images:



Coomassie blue staining of purified SULT1C2 protein (Cat# [TP302775]). The protein was produced from HEK293T cells transfected with SULT1C2 cDNA clone (Cat# [RC202775]) using MegaTran 2.0 (Cat# [TT210002]).