

## Product datasheet for PH302773

### PSP (REG1A) (NM\_002909) Human Mass Spec Standard

#### Product data:

Product Type:	Mass Spec Standards
Description:	REG1A MS Standard C13 and N15-labeled recombinant protein (NP_002900)
Species:	Human
Expression Host:	HEK293
Expression cDNA Clone or AA Sequence:	RC202773
Predicted MW:	18.7 kDa
Protein Sequence:	>RC202773 protein sequence Red=Cloning site Green=Tags(s)  MAQTSSYFMLISCLMFLSQSQGQEAQTELPQARISCEPGTNAYRSYCYFNEEDRETWVDADLYCQNMNSG NLVSVLTQAEAFVASL IKESGTDDFNWIGLHDPKKNRRWHWSSGSLVSYKSWGIGAPSSVNPGYCVSL TSSTGFQKWKDVPCEDKFSFVCKFKN  TRTRPLEQKLI SEEDLAANDILDYKDDDDKV
Tag:	C-Myc/DDK
Purity:	> 80% as determined by SDS-PAGE and Coomassie blue staining
Concentration:	>0.05 µg/µL as determined by microplate BCA method
Labeling Method:	Labeled with [U- <sup>13</sup> C <sub>6</sub> , <sup>15</sup> N <sub>4</sub> ]-L-Arginine and [U- <sup>13</sup> C <sub>6</sub> , <sup>15</sup> N <sub>2</sub> ]-L-Lysine
Buffer:	25 mM Tris-HCl, 100 mM glycine, pH 7.3
Storage:	Store at -80°C. Avoid repeated freeze-thaw cycles.
Stability:	Stable for 3 months from receipt of products under proper storage and handling conditions.
RefSeq:	<u><a href="#">NP_002900</a></u>
RefSeq Size:	821
RefSeq ORF:	498
Synonyms:	ICRF; P19; PSP; PSPS; PSPS1; PTP; REG
Locus ID:	5967
UniProt ID:	<u><a href="#">P05451</a></u> , <u><a href="#">A8K7G6</a></u>

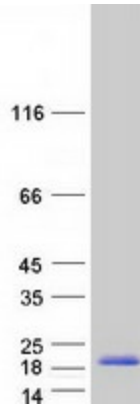


[View online »](#)

Cytogenetics: 2p12

**Summary:** This gene is a type I subclass member of the Reg gene family. The Reg gene family is a multigene family grouped into four subclasses, types I, II, III and IV, based on the primary structures of the encoded proteins. This gene encodes a protein that is secreted by the exocrine pancreas. It is associated with islet cell regeneration and diabetogenesis and may be involved in pancreatic lithogenesis. Reg family members REG1B, REGL, PAP and this gene are tandemly clustered on chromosome 2p12 and may have arisen from the same ancestral gene by gene duplication. [provided by RefSeq, Jul 2008]

### Product images:



Coomassie blue staining of purified REG1A protein (Cat# [TP302773]). The protein was produced from HEK293T cells transfected with REG1A cDNA clone (Cat# [RC202773]) using MegaTran 2.0 (Cat# [TT210002]).