

Product datasheet for PH302757

Lumican (LUM) (NM_002345) Human Mass Spec Standard

Product data:

Product Type:	Mass Spec Standards
Description:	LUM MS Standard C13 and N15-labeled recombinant protein (NP_002336)
Species:	Human
Expression Host:	HEK293
Expression cDNA Clone or AA Sequence:	RC202757
Predicted MW:	38.4 kDa
Protein Sequence:	>RC202757 protein sequence Red=Cloning site Green=Tags(s) MSLSAFTLFLALIGGTSGQYYDYDFPLSIYGQSSPNCAPCPCPEYSPSAMCYDELKLSVPMVPPGIKY LYLRNNQIDHIDEKAFENVTDLQWLILDHNLLENSKIKGRVFSKLGKQKLLHINHNLTESVGPLPKSLE DLQLTHNKITKLGSEGLVNLTFIHLQHNRLKEDAVSAAFGLKLSLEYLDL SFNQIARLPSGLPVSLTL YLDNNKISNIPDEYFKRFNALQYLRLSHNELADSGIPGNSFNVSSLVELDL SYNKLNKIPTVNNENLNY LEVNQLEKFDIKSFCKILGPLSYKIKHLRLDGNRISETSLPPDMECLRVANEVTLN TRTRPLEQKLI SEEDLAANDILDYKDDDDKV
Tag:	C-Myc/DDK
Purity:	> 80% as determined by SDS-PAGE and Coomassie blue staining
Concentration:	>0.05 µg/µL as determined by microplate BCA method
Labeling Method:	Labeled with [U- ¹³ C ₆ , ¹⁵ N ₄]-L-Arginine and [U- ¹³ C ₆ , ¹⁵ N ₂]-L-Lysine
Buffer:	25 mM Tris-HCl, 100 mM glycine, pH 7.3
Storage:	Store at -80°C. Avoid repeated freeze-thaw cycles.
Stability:	Stable for 3 months from receipt of products under proper storage and handling conditions.
RefSeq:	<u>NP_002336</u>
RefSeq Size:	2116
RefSeq ORF:	1014
Synonyms:	LDC; SLRR2D
Locus ID:	4060



[View online »](#)

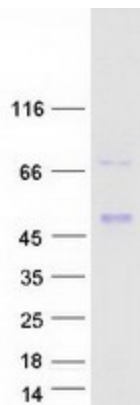
UniProt ID: [P51884](#), [A0A384N669](#)

Cytogenetics: 12q21.33

Summary: This gene encodes a member of the small leucine-rich proteoglycan (SLRP) family that includes decorin, biglycan, fibromodulin, keratocan, epiphycan, and osteoglycin. In these bifunctional molecules, the protein moiety binds collagen fibrils and the highly charged hydrophilic glycosaminoglycans regulate interfibrillar spacings. Lumican is the major keratan sulfate proteoglycan of the cornea but is also distributed in interstitial collagenous matrices throughout the body. Lumican may regulate collagen fibril organization and circumferential growth, corneal transparency, and epithelial cell migration and tissue repair. [provided by RefSeq, Jul 2008]

Protein Families: Secreted Protein

Product images:



Coomassie blue staining of purified LUM protein (Cat# [TP302757]). The protein was produced from HEK293T cells transfected with LUM cDNA clone (Cat# [RC202757]) using MegaTran 2.0 (Cat# [TT210002]).