

Product datasheet for PH302750

myosin light chain 1 (MYL1) (NM_079422) Human Mass Spec Standard

Product data:

Product Type:	Mass Spec Standards
Description:	MYL1 MS Standard C13 and N15-labeled recombinant protein (NP_524146)
Species:	Human
Expression Host:	HEK293
Expression cDNA Clone or AA Sequence:	RC202750
Predicted MW:	16.7 kDa
Protein Sequence:	>RC202750 protein sequence Red=Cloning site Green=Tags(s) MSFSADQIAEFKEAFLLFDRTGDSKITLSQVGDVLRALGTNPTNAEVRKVLGNPSNEELNAKKIEFEQFL PMMQAI SNNKDQATYEDFVEGLRVFDKEGNGTVMGAELRHVLATLGEKMKEEEVEALMAGQEDSNGCINY EAFVKHIMSI TRTRPLEQKLI SEEDLAANDILDYKDDDDKV
Tag:	C-Myc/DDK
Purity:	> 80% as determined by SDS-PAGE and Coomassie blue staining
Concentration:	>0.05 µg/µL as determined by microplate BCA method
Labeling Method:	Labeled with [U- ¹³ C ₆ , ¹⁵ N ₄]-L-Arginine and [U- ¹³ C ₆ , ¹⁵ N ₂]-L-Lysine
Buffer:	25 mM Tris-HCl, 100 mM glycine, pH 7.3
Storage:	Store at -80°C. Avoid repeated freeze-thaw cycles.
Stability:	Stable for 3 months from receipt of products under proper storage and handling conditions.
RefSeq:	NP_524146
RefSeq Size:	862
RefSeq ORF:	450
Synonyms:	MLC1F; MLC3F; MYOFTA
Locus ID:	4632
UniProt ID:	P05976

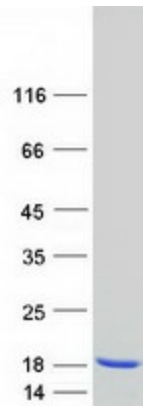


[View online »](#)

Cytogenetics: 2q34

Summary: Myosin is a hexameric ATPase cellular motor protein. It is composed of two heavy chains, two nonphosphorylatable alkali light chains, and two phosphorylatable regulatory light chains. This gene encodes a myosin alkali light chain expressed in fast skeletal muscle. Two transcript variants have been identified for this gene. [provided by RefSeq, Jul 2008]

Product images:



Coomassie blue staining of purified MYL1 protein (Cat# [TP302750]). The protein was produced from HEK293T cells transfected with MYL1 cDNA clone (Cat# [RC202750]) using MegaTran 2.0 (Cat# [TT210002]).