

Product datasheet for PH302743

HLA-DRB4 (NM_021983) Human Mass Spec Standard

Product data:

Product Type:	Mass Spec Standards
Description:	HLA MS Standard C13 and N15-labeled recombinant protein (NP_068818)
Species:	Human
Expression Host:	HEK293
Expression cDNA Clone or AA Sequence:	RC202743
Predicted MW:	29.9 kDa
Protein Sequence:	>RC202743 protein sequence Red=Cloning site Green=Tags(s) MVCLKLPGGSCMAALTVTLTVLSSPLALAGDTQPRFLEQAKCECHFNGTERVWNLIRYIYNQEEYARYN SDLGEYQAVTELGRPDAEYWNSQKDLLERRRAEVDTYCRYNYGVVESFTVQRRVQPKVTYVPSKTQPLQH HNLLVCSVNGFYPGSIEVRWFRNGQEEKAGVVSTGLIQNGDWFQTLVMLETVPRSGEVYTCQVEHPMM SPLTVQWSARSESAQSKMLSGVGGFVLGLLFLGTGLFIYFRNQKGHSGLQPTGLLS TRTRPLEQKLI SEEDLAANDILDYKDDDDKV
Tag:	C-Myc/DDK
Purity:	> 80% as determined by SDS-PAGE and Coomassie blue staining
Concentration:	>0.05 µg/µL as determined by microplate BCA method
Labeling Method:	Labeled with [U- ¹³ C ₆ , ¹⁵ N ₄]-L-Arginine and [U- ¹³ C ₆ , ¹⁵ N ₂]-L-Lysine
Buffer:	25 mM Tris-HCl, 100 mM glycine, pH 7.3
Storage:	Store at -80°C. Avoid repeated freeze-thaw cycles.
Stability:	Stable for 3 months from receipt of products under proper storage and handling conditions.
RefSeq:	NP_068818
RefSeq Size:	1193
RefSeq ORF:	798
Synonyms:	DR4; DRB4; HLA-DR4B; HLA-DRB4*
Locus ID:	3126
UniProt ID:	P13762 , X5D2U9



[View online »](#)

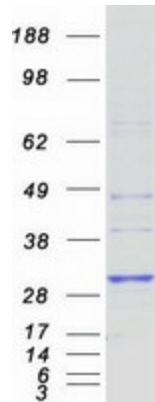
Cytogenetics: 6p21.3

Summary: HLA-DRB4 belongs to the HLA class II beta chain paralogues. This class II molecule is a heterodimer consisting of an alpha (DRA) and a beta (DRB) chain, both anchored in the membrane. It plays a central role in the immune system by presenting peptides derived from extracellular proteins. Class II molecules are expressed in antigen presenting cells. The beta chain is approximately 26-28 kDa and its gene contains 6 exons. Exon one encodes the leader peptide, exons 2 and 3 encode the two extracellular domains, exon 4 encodes the transmembrane domain and exon 5 encodes the cytoplasmic tail. Within the DR molecule the beta chain contains all the polymorphisms specifying the peptide binding specificities. Typing for these polymorphisms is routinely done for bone marrow and kidney transplantation. There are multiple pseudogenes of this gene. [provided by RefSeq, Feb 2020]

Protein Families: Transmembrane

Protein Pathways: Allograft rejection, Antigen processing and presentation, Asthma, Autoimmune thyroid disease, Cell adhesion molecules (CAMs), Graft-versus-host disease, Hematopoietic cell lineage, Systemic lupus erythematosus, Type I diabetes mellitus, Viral myocarditis

Product images:



Coomassie blue staining of purified HLA-DRB4 protein (Cat# [TP302743]). The protein was produced from HEK293T cells transfected with HLA-DRB4 cDNA clone (Cat# [RC202743]) using MegaTran 2.0 (Cat# [TT210002]).