

Product datasheet for PH302740

Prostate Specific Antigen (KLK3) (NM_001648) Human Mass Spec Standard

Product data:

Product Type:	Mass Spec Standards
Description:	KLK3 MS Standard C13 and N15-labeled recombinant protein (NP_001639)
Species:	Human
Expression Host:	HEK293
Expression cDNA Clone or AA Sequence:	RC202740
Predicted MW:	28.7 kDa
Protein Sequence:	>RC202740 protein sequence Red=Cloning site Green=Tags(s) MWVPVFLTSLVTWIGAAPLILSRIVGGWECEKHSQPWQVLVASRGRAVCGGVLVHPQWVLTAAHCIRNK SVILLGRHSLFHPEDTGQVFQVSHSFPHPLYDMSLLKNRFLRPGDDSSHDLMLLRLSEPAELTDAVKVMD LPTQEPALGTTTCYASGWGSIEPEEFLTPKKLQCVDLHVISNDVCAQVHPQKVTKFMLCAGRWTGGKSTCS GDSGGPLVCNGVLQGITSWGSEPCALPERPSLYTKVVHYRKWIKDTIVANP TRTRPLEQKLI SEEDLAANDILDYKDDDDKV
Tag:	C-Myc/DDK
Purity:	> 80% as determined by SDS-PAGE and Coomassie blue staining
Concentration:	>0.05 µg/µL as determined by microplate BCA method
Labeling Method:	Labeled with [U- ¹³ C ₆ , ¹⁵ N ₄]-L-Arginine and [U- ¹³ C ₆ , ¹⁵ N ₂]-L-Lysine
Buffer:	25 mM Tris-HCl, 100 mM glycine, pH 7.3
Storage:	Store at -80°C. Avoid repeated freeze-thaw cycles.
Stability:	Stable for 3 months from receipt of products under proper storage and handling conditions.
RefSeq:	NP_001639
RefSeq Size:	1464
RefSeq ORF:	783
Synonyms:	APS; hK3; KLK2A1; PSA
Locus ID:	354
UniProt ID:	P07288 , Q546G3



[View online »](#)

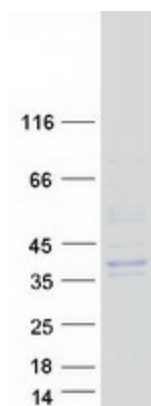
Cytogenetics: 19q13.33

Summary: Kallikreins are a subgroup of serine proteases having diverse physiological functions. Growing evidence suggests that many kallikreins are implicated in carcinogenesis and some have potential as novel cancer and other disease biomarkers. The gene is one of the fifteen kallikrein subfamily members located in a cluster on chromosome 19. It encodes a single-chain glycoprotein, a protease which is synthesized in the epithelial cells of the prostate gland, and is present in seminal plasma. It is thought to function normally in the liquefaction of seminal coagulum, presumably by hydrolysis of the high molecular mass seminal vesicle protein. The serum level of this protein, called PSA in the clinical setting, is useful in the diagnosis and monitoring of prostatic carcinoma. Alternate splicing of this gene generates several transcript variants encoding different isoforms. [provided by RefSeq, Dec 2019]

Protein Families: Druggable Genome, Protease, Secreted Protein

Protein Pathways: Pathways in cancer, Prostate cancer

Product images:



Coomassie blue staining of purified KLK3 protein (Cat# [TP302740]). The protein was produced from HEK293T cells transfected with KLK3 cDNA clone (Cat# [RC202740]) using MegaTran 2.0 (Cat# [TT210002]).