

Product datasheet for PH302731

TXNL2 (GLRX3) (NM_006541) Human Mass Spec Standard

Product data:

Product Type:	Mass Spec Standards
Description:	GLRX3 MS Standard C13 and N15-labeled recombinant protein (NP_006532)
Species:	Human
Expression Host:	HEK293
Expression cDNA Clone or AA Sequence:	RC202731
Predicted MW:	37.4 kDa
Protein Sequence:	>RC202731 protein sequence Red=Cloning site Green=Tags(s)

MAAGAAEAAVAAVEEVGSAGQFEELLRLKAKSLLVVFHWPAPQCAQMNEVMAELAKELPQVSFVKLEA
EGVPEVSEKYEISSVPTFLFFKNSQKIDRLDGAHAPELTKKVQRHASSGSFLPSANEHLKEDLNLRKLL
THAAPCMLFMKGTPQEPRCGFSKQMV EILHKHNIQFSSFDIFSDEEVRQGLKAYSSWPTYPLQYVSGELI
GGLDIIKELEAEEELDTICPKAPKLEERLKVLTNKASVMLFMKGNKQEA KCGFSKQILEILNSTGVEYET
FDILEDEEVRQGLKAYSNWPTYPLQYVKGELVGGLDIVKELKENGELLPILRGEN

TRTRPLEQKLISEEDLAANDILDYKDDDDKV

Tag:	C-Myc/DDK
Purity:	> 80% as determined by SDS-PAGE and Coomassie blue staining
Concentration:	>0.05 µg/µL as determined by microplate BCA method
Labeling Method:	Labeled with [U- ¹³ C ₆ , ¹⁵ N ₄]-L-Arginine and [U- ¹³ C ₆ , ¹⁵ N ₂]-L-Lysine
Buffer:	25 mM Tris-HCl, 100 mM glycine, pH 7.3
Storage:	Store at -80°C. Avoid repeated freeze-thaw cycles.
Stability:	Stable for 3 months from receipt of products under proper storage and handling conditions.
RefSeq:	NP_006532
RefSeq Size:	1343
RefSeq ORF:	1005
Synonyms:	GLRX4; GRX3; GRX4; PICOT; TXNL2; TXNL3
Locus ID:	10539



[View online »](#)

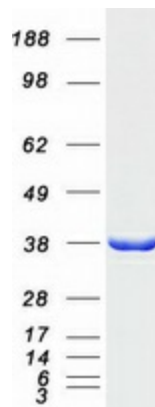
UniProt ID: [O76003](#), [A0A140VJK1](#)

Cytogenetics: 10q26.3

Summary: This gene encodes a member of the glutaredoxin family. Glutaredoxins are oxidoreductase enzymes that reduce a variety of substrates using glutathione as a cofactor. The encoded protein binds to and modulates the function of protein kinase C theta. The encoded protein may also inhibit apoptosis and play a role in cellular growth, and the expression of this gene may be a marker for cancer. Pseudogenes of this gene are located on the short arm of chromosomes 6 and 9. Alternatively spliced transcript variants have been observed for this gene. [provided by RefSeq, Dec 2010]

Protein Families: Druggable Genome

Product images:



Coomassie blue staining of purified GLRX3 protein (Cat# [TP302731]). The protein was produced from HEK293T cells transfected with GLRX3 cDNA clone (Cat# [RC202731]) using MegaTran 2.0 (Cat# [TT210002]).