

Product datasheet for PH302726

CLIC3 (NM_004669) Human Mass Spec Standard

Product data:

Product Type:	Mass Spec Standards
Description:	CLIC3 MS Standard C13 and N15-labeled recombinant protein (NP_004660)
Species:	Human
Expression Host:	HEK293
Expression cDNA Clone or AA Sequence:	RC202726
Predicted MW:	26.6 kDa
Protein Sequence:	>RC202726 protein sequence Red=Cloning site Green=Tags(s) MAETKLQLFVKASEDGESVGHCPSCQRLFMVLLKGVVPTLTTVDTRRSPDVLKDFAPGSQLPILLYDSD AKTDTLQIEDFLEETLGPDPFSLAPRYRESNTAGNDVFHKFSAFIKNPVPAQDEALYQQLLRALARLDS YLRAPLEHELAGEPQLRESRRRFLDGDRLTLADCSLLPKLHIVDTVCAHFRQAPIPAELRGVRRYLD SAM QEKEFKYTCPHSAEILAAAYRPAVHPR TRTRPLEQKLI SEEDLAANDILDYKDDDDKV
Tag:	C-Myc/DDK
Purity:	> 80% as determined by SDS-PAGE and Coomassie blue staining
Concentration:	>0.05 µg/µL as determined by microplate BCA method
Labeling Method:	Labeled with [U- ¹³ C ₆ , ¹⁵ N ₄]-L-Arginine and [U- ¹³ C ₆ , ¹⁵ N ₂]-L-Lysine
Buffer:	25 mM Tris-HCl, 100 mM glycine, pH 7.3
Storage:	Store at -80°C. Avoid repeated freeze-thaw cycles.
Stability:	Stable for 3 months from receipt of products under proper storage and handling conditions.
RefSeq:	NP_004660
RefSeq Size:	813
RefSeq ORF:	708
Locus ID:	9022
UniProt ID:	O95833
Cytogenetics:	9q34.3



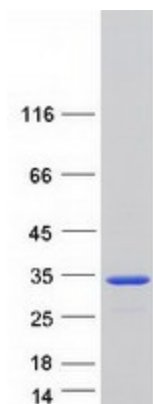
[View online »](#)

Summary:

Chloride channels are a diverse group of proteins that regulate fundamental cellular processes including stabilization of cell membrane potential, transepithelial transport, maintenance of intracellular pH, and regulation of cell volume. Chloride intracellular channel 3 is a member of the p64 family and is predominantly localized in the nucleus and stimulates chloride ion channel activity. In addition, this protein may participate in cellular growth control, based on its association with ERK7, a member of the MAP kinase family. [provided by RefSeq, Jul 2008]

Protein Families:

Druggable Genome, Ion Channels: Other

Product images:

Coomassie blue staining of purified CLIC3 protein (Cat# [TP302726]). The protein was produced from HEK293T cells transfected with CLIC3 cDNA clone (Cat# [RC202726]) using MegaTran 2.0 (Cat# [TT210002]).