

Product datasheet for PH302721

Creatine kinase M type (CKM) (NM_001824) Human Mass Spec Standard

Product data:

Product Type:	Mass Spec Standards
Description:	CKM MS Standard C13 and N15-labeled recombinant protein (NP_001815)
Species:	Human
Expression Host:	HEK293
Expression cDNA Clone or AA Sequence:	RC202721
Predicted MW:	43.1 kDa
Protein Sequence:	>RC202721 protein sequence Red=Cloning site Green=Tags(s)
	MPFGNTHNKFKLNYKPEEEYPDL SKHNNHMAKVL TLELYKKLRDKETPSGFTVDDVIQTGVDNPGHPFIM TVGCVAGDEESYEVFKELFDPIISDRHGGYKPTDKHKTDLNHENLKGDDLDPNYVLSRVRTGRSIKGY TLPPHCSRGERRAVEKLSVEALNSLTGEFKGKYYP LKSMTEKEQQQLIDDHFLFDKPVSP LLLASGMARD WPDARGIWHNDNKSLLVWVNEEDHLRVISMEKGGNMKEVFRFCVGLQKIEEIFKKAGHPFMWNQHLGYV LTCPSNLGTGLRGGVHVKLAHL SKHPKFEEILTRLRLQKRGTGGVDTAAVGSVFDVSNADRLGSSEVEQV QLVVDGVKLMVEMEKKLEKQSIDDMIPAQK
	TRTRPLEQKLI SEEDLAANDILDYKDDDDKV
Tag:	C-Myc/DDK
Purity:	> 80% as determined by SDS-PAGE and Coomassie blue staining
Concentration:	>0.05 µg/µL as determined by microplate BCA method
Labeling Method:	Labeled with [U- ¹³ C ₆ , ¹⁵ N ₄]-L-Arginine and [U- ¹³ C ₆ , ¹⁵ N ₂]-L-Lysine
Buffer:	25 mM Tris-HCl, 100 mM glycine, pH 7.3
Storage:	Store at -80°C. Avoid repeated freeze-thaw cycles.
Stability:	Stable for 3 months from receipt of products under proper storage and handling conditions.
RefSeq:	<u>NP_001815</u>
RefSeq Size:	1666
RefSeq ORF:	1143
Synonyms:	CKMM; CPK-M; M-CK
Locus ID:	1158



[View online »](#)

UniProt ID: [P06732](#), [B2R892](#)

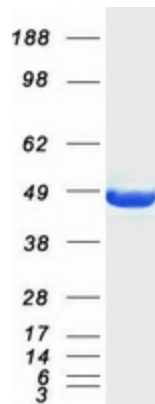
Cytogenetics: 19q13.32

Summary: The protein encoded by this gene is a cytoplasmic enzyme involved in energy homeostasis and is an important serum marker for myocardial infarction. The encoded protein reversibly catalyzes the transfer of phosphate between ATP and various phosphogens such as creatine phosphate. It acts as a homodimer in striated muscle as well as in other tissues, and as a heterodimer with a similar brain isozyme in heart. The encoded protein is a member of the ATP:guanido phosphotransferase protein family. [provided by RefSeq, Jul 2008]

Protein Families: Druggable Genome

Protein Pathways: Arginine and proline metabolism, Metabolic pathways

Product images:



Coomassie blue staining of purified CKM protein (Cat# [TP302721]). The protein was produced from HEK293T cells transfected with CKM cDNA clone (Cat# [RC202721]) using MegaTran 2.0 (Cat# [TT210002]).