

## Product datasheet for PH302719

### Carboxypeptidase A2 (CPA2) (NM\_001869) Human Mass Spec Standard

#### Product data:

|                                       |   |
|---------------------------------------|---|
| Product Type:                         | Mass Spec Standards   |
| Description:                          | CPA2 MS Standard C13 and N15-labeled recombinant protein (NP_001860)  |
| Species:                              | Human   |
| Expression Host:                      | HEK293  |
| Expression cDNA Clone or AA Sequence: | RC202719  |
| Predicted MW:                         | 46.8 kDa  |
| Protein Sequence:                     | >RC202719 protein sequence<br>Red=Cloning site Green=Tags(s)<br><br>MRLILFFGALFGHIYCLETFVGDQVLEIVPSNEEQIKNLLQLEAQEHLQLDFWKSPTTPGETAHVRVPFV<br>NVQAVKVFLLGSGIAYSIMIEDVQVLLDKENEEMLFNRRRERSGNFNGAYHTLEEISQEMDNLVAEHPG<br>LVSKVNISSFENRPMNVLFKSTGGDKPAIWL DAGIHAREWVTQATALWTANKIVSDYGKDP SITSILDA<br>LDIFLLPVTNPDGYVFSQTKNRMWRKTRSKVSGSLCVGVDPNRRWDAGFGGPGASSNPCSDSYHGPSANS<br>EVEVKSI VDFIKSHGKVKAFITLHSYSQLLMFPYGYKCTKLDDFDELSEVAQKAAQSLRSLHGTYKVGVP<br>ICSVIYQASGGSIDWSYDYGIKYSFAFELRDTGRYGFLPARQILPTAEETWLGLKAIMEHVRDHPY<br><br>TRTRPLEQKLI SEEDLAANDILDYKDDDDKV |
| Tag:                                  | C-Myc/DDK   |
| Purity:                               | > 80% as determined by SDS-PAGE and Coomassie blue staining   |
| Concentration:                        | >0.05 µg/µL as determined by microplate BCA method  |
| Labeling Method:                      | Labeled with [U- <sup>13</sup> C <sub>6</sub> , <sup>15</sup> N <sub>4</sub> ]-L-Arginine and [U- <sup>13</sup> C <sub>6</sub> , <sup>15</sup> N <sub>2</sub> ]-L-Lysine  |
| Buffer:                               | 25 mM Tris-HCl, 100 mM glycine, pH 7.3  |
| Storage:                              | Store at -80°C. Avoid repeated freeze-thaw cycles.  |
| Stability:                            | Stable for 3 months from receipt of products under proper storage and handling conditions.  |
| RefSeq:                               | <u>NP_001860</u>  |
| RefSeq Size:                          | 1342  |
| RefSeq ORF:                           | 1251  |
| Locus ID:                             | 1358  |
| UniProt ID:                           | <u>P48052</u>   |



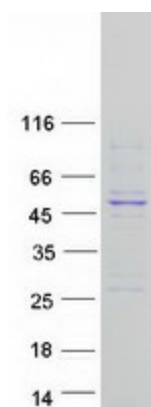
[View online »](#)

Cytogenetics: 7q32.2

**Summary:** Three different forms of human pancreatic procarboxypeptidase A have been isolated. The encoded protein represents the A2 form, which is a monomeric protein with different biochemical properties from the A1 and A3 forms. The A2 form of pancreatic procarboxypeptidase acts on aromatic C-terminal residues and is a secreted protein. [provided by RefSeq, Dec 2008]

**Protein Families:** Druggable Genome, Protease, Secreted Protein

### Product images:



Coomassie blue staining of purified CPA2 protein (Cat# [TP302719]). The protein was produced from HEK293T cells transfected with CPA2 cDNA clone (Cat# [RC202719]) using MegaTran 2.0 (Cat# [TT210002]).