

Product datasheet for PH302717

GLP1 (GCG) (NM_002054) Human Mass Spec Standard

Product data:

Product Type:	Mass Spec Standards
Description:	GCG MS Standard C13 and N15-labeled recombinant protein (NP_002045)
Species:	Human
Expression Host:	HEK293
Expression cDNA Clone or AA Sequence:	RC202717
Predicted MW:	20.9 kDa
Protein Sequence:	>RC202717 protein sequence Red=Cloning site Green=Tags(s) MKSIIYFVAGLFVMLVQGSWQRSLQDTEEKSRFSASQADPLSDPDQMNEKDRHSQGTFTSDYSKYLDSRR AQDFVQWLMNTRNRNIIAKRHDEFERHAEFTSDVSSYLEGQAAKEFIAWLKGRGRDFPEEVAIVE ELGRRHADGSFSDMNTILDNLAARDFINWLIQTKITDRK TRTRPLEQKLISEEDLAANDILDYKDDDDKV
Tag:	C-Myc/DDK
Purity:	> 80% as determined by SDS-PAGE and Coomassie blue staining
Concentration:	>0.05 µg/µL as determined by microplate BCA method
Labeling Method:	Labeled with [U- 13C6, 15N4]-L-Arginine and [U- 13C6, 15N2]-L-Lysine
Buffer:	25 mM Tris-HCl, 100 mM glycine, pH 7.3
Storage:	Store at -80°C. Avoid repeated freeze-thaw cycles.
Stability:	Stable for 3 months from receipt of products under proper storage and handling conditions.
RefSeq:	<u>NP_002045</u>
RefSeq Size:	1294
RefSeq ORF:	540
Synonyms:	GLP-1; GLP1; GLP2; GRPP
Locus ID:	2641
UniProt ID:	<u>P01275</u>



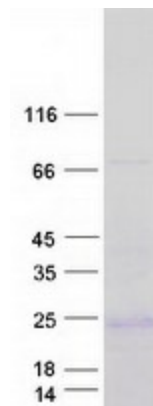
[View online »](#)

Cytogenetics: 2q24.2

Summary: The protein encoded by this gene is actually a preproprotein that is cleaved into four distinct mature peptides. One of these, glucagon, is a pancreatic hormone that counteracts the glucose-lowering action of insulin by stimulating glycogenolysis and gluconeogenesis. Glucagon is a ligand for a specific G-protein linked receptor whose signalling pathway controls cell proliferation. Two of the other peptides are secreted from gut endocrine cells and promote nutrient absorption through distinct mechanisms. Finally, the fourth peptide is similar to glicentin, an active enteroglucagon. [provided by RefSeq, Jul 2008]

Protein Families: Druggable Genome, ES Cell Differentiation/IPS, Secreted Protein

Product images:



Coomassie blue staining of purified GCG protein (Cat# [TP302717]). The protein was produced from HEK293T cells transfected with GCG cDNA clone (Cat# [RC202717]) using MegaTran 2.0 (Cat# [TT210002]).