

Product datasheet for PH302716

IL18 (NM_001562) Human Mass Spec Standard

Product data:

Product Type:	Mass Spec Standards
Description:	IL18 MS Standard C13 and N15-labeled recombinant protein (NP_001553)
Species:	Human
Expression Host:	HEK293
Expression cDNA Clone or AA Sequence:	RC202716
Predicted MW:	22.3 kDa
Protein Sequence:	>RC202716 protein sequence Red=Cloning site Green=Tags(s) MAAEPVEDNCINFVAMKFIDNTLYFIAEDDENLESDYFGKLESKLSVIRNLNDQVLFIDQGNRPLFEDMT DSDCRDNAPRTIFIISMYKDSQPRGMAVTISVKCEKISTLSCEKIIISFKEMNPPDNIKDTSKSDIIFQQR SVPGHDKMKQFESSYEGYFLACEKERDLFKLILKKEDELGDRSIMFTVQNE TRTRPLEQKLISEEDLAANDILDYKDDDDKV
Tag:	C-Myc/DDK
Purity:	> 80% as determined by SDS-PAGE and Coomassie blue staining
Concentration:	>0.05 µg/µL as determined by microplate BCA method
Labeling Method:	Labeled with [U- ¹³ C ₆ , ¹⁵ N ₄]-L-Arginine and [U- ¹³ C ₆ , ¹⁵ N ₂]-L-Lysine
Buffer:	25 mM Tris-HCl, 100 mM glycine, pH 7.3
Storage:	Store at -80°C. Avoid repeated freeze-thaw cycles.
Stability:	Stable for 3 months from receipt of products under proper storage and handling conditions.
RefSeq:	NP_001553
RefSeq Size:	1163
RefSeq ORF:	579
Synonyms:	IGIF; IL-1g; IL-18; IL1F4
Locus ID:	3606
UniProt ID:	Q14116



[View online »](#)

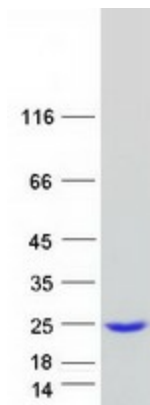
Cytogenetics: 11q23.1

Summary: The protein encoded by this gene is a proinflammatory cytokine of the IL-1 family that is constitutively found as a precursor within the cytoplasm of a variety of cells including macrophages and keratinocytes. The inactive IL-18 precursor is processed to its active form by caspase-1, and is capable of stimulating interferon gamma production, and of regulating both T helper (Th) 1 and Th2 responses. This cytokine has been implicated in the injury of different organs, and in potentially fatal conditions characterized by a cytokine storm. In humans, IL-18 gene is located on chromosome 11. Alternatively spliced transcript variants encoding different isoforms have been found for this gene.[provided by RefSeq, Aug 2020]

Protein Families: Druggable Genome, Secreted Protein

Protein Pathways: Cytokine-cytokine receptor interaction, Cytosolic DNA-sensing pathway, NOD-like receptor signaling pathway

Product images:



Coomassie blue staining of purified IL18 protein (Cat# [TP302716]). The protein was produced from HEK293T cells transfected with IL18 cDNA clone (Cat# [RC202716]) using MegaTran 2.0 (Cat# [TT210002]).