

## Product datasheet for PH302715

### NDUFA2 (NM\_002488) Human Mass Spec Standard

#### Product data:

Product Type:	Mass Spec Standards
Description:	NDUFA2 MS Standard C13 and N15-labeled recombinant protein (NP_002479)
Species:	Human
Expression Host:	HEK293
Expression cDNA Clone or AA Sequence:	RC202715
Predicted MW:	10.9 kDa
Protein Sequence:	>RC202715 protein sequence <b>Red</b> =Cloning site <b>Green</b> =Tags(s)  MAAAAASRGVGAKLGLREIRIHLQRSPGSQGVRFIEKRYVELKKANPDLPIILIRECSDVQPKLWARYA FGQETNVPLNNSADQVTRALENVLSGKA  <b>TRTRPLEQKLISEEDLAANDILDYKDDDDKV</b>
Tag:	C-Myc/DDK
Purity:	> 80% as determined by SDS-PAGE and Coomassie blue staining
Concentration:	>0.05 µg/µL as determined by microplate BCA method
Labeling Method:	Labeled with [U- 13C6, 15N4]-L-Arginine and [U- 13C6, 15N2]-L-Lysine
Buffer:	25 mM Tris-HCl, 100 mM glycine, pH 7.3
Storage:	Store at -80°C. Avoid repeated freeze-thaw cycles.
Stability:	Stable for 3 months from receipt of products under proper storage and handling conditions.
RefSeq:	<a href="#">NP_002479</a>
RefSeq Size:	726
RefSeq ORF:	297
Synonyms:	B8; CD14; CIB8; MC1DN13
Locus ID:	4695
UniProt ID:	<a href="#">O43678</a>
Cytogenetics:	5q31.3



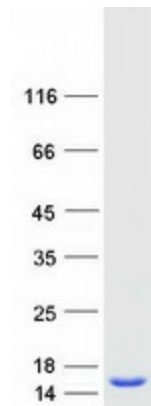
[View online »](#)

**Summary:**

The encoded protein is a subunit of the hydrophobic protein fraction of the NADH:ubiquinone oxidoreductase (complex 1), the first enzyme complex in the electron transport chain located in the inner mitochondrial membrane, and may be involved in regulating complex I activity or its assembly via assistance in redox processes. Mutations in this gene are associated with Leigh syndrome, an early-onset progressive neurodegenerative disorder. Alternative splicing results in multiple transcript variants.[provided by RefSeq, May 2010]

**Protein Pathways:**

Alzheimer's disease, Huntington's disease, Metabolic pathways, Oxidative phosphorylation, Parkinson's disease

**Product images:**

Coomassie blue staining of purified NDUFA2 protein (Cat# [TP302715]). The protein was produced from HEK293T cells transfected with NDUFA2 cDNA clone (Cat# [RC202715]) using MegaTran 2.0 (Cat# [TT210002]).