

Product datasheet for PH302704

MSMB (NM_002443) Human Mass Spec Standard

Product data:

Product Type:	Mass Spec Standards
Description:	MSMB MS Standard C13 and N15-labeled recombinant protein (NP_002434)
Species:	Human
Expression Host:	HEK293
Expression cDNA Clone or AA Sequence:	RC202704
Predicted MW:	12.9 kDa
Protein Sequence:	>RC202704 protein sequence Red=Cloning site Green=Tags(s) MNVLLGSVVIFATFVTLGNASCYFIPNEGVPDSTRKCMDLKGNKHPINSEWQTDNCETCTCYETEISCC TLVSTPVGYDKDNCQRIFKKEDCKYIVVEKKDPKKTCSVSEWII TRTRPLEQKLISEEDLAANDILDYKDDDDKV
Tag:	C-Myc/DDK
Purity:	> 80% as determined by SDS-PAGE and Coomassie blue staining
Concentration:	>0.05 µg/µL as determined by microplate BCA method
Labeling Method:	Labeled with [U- 13C6, 15N4]-L-Arginine and [U- 13C6, 15N2]-L-Lysine
Buffer:	25 mM Tris-HCl, 100 mM glycine, pH 7.3
Storage:	Store at -80°C. Avoid repeated freeze-thaw cycles.
Stability:	Stable for 3 months from receipt of products under proper storage and handling conditions.
RefSeq:	NP_002434
RefSeq Size:	503
RefSeq ORF:	342
Synonyms:	HPC13; IGBF; MSP; MSPB; PN44; PRPS; PSP; PSP-94; PSP57; PSP94
Locus ID:	4477
UniProt ID:	P08118
Cytogenetics:	10q11.22



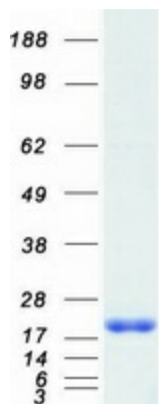
[View online »](#)

Summary:

The protein encoded by this gene is a member of the immunoglobulin binding factor family. It is synthesized by the epithelial cells of the prostate gland and secreted into the seminal plasma. This protein has inhibin-like activity. It may have a role as an autocrine paracrine factor in uterine, breast and other female reproductive tissues. The expression of the encoded protein is found to be decreased in prostate cancer. Two alternatively spliced transcript variants encoding different isoforms are described for this gene. The use of alternate polyadenylation sites has been found for this gene. [provided by RefSeq, Jul 2008]

Protein Families:

Secreted Protein, Transmembrane

Product images:

Coomassie blue staining of purified MSMB protein (Cat# [TP302704]). The protein was produced from HEK293T cells transfected with MSMB cDNA clone (Cat# [RC202704]) using MegaTran 2.0 (Cat# [TT210002]).