

## Product datasheet for PH302698

### ARL 1 (ARL1) (NM\_001177) Human Mass Spec Standard

#### Product data:

Product Type:	Mass Spec Standards
Description:	ARL1 MS Standard C13 and N15-labeled recombinant protein (NP_001168)
Species:	Human
Expression Host:	HEK293
Expression cDNA Clone or AA Sequence:	RC202698
Predicted MW:	20.4 kDa
Protein Sequence:	>RC202698 protein sequence Red=Cloning site Green=Tags(s)  MGGFFSSIFSSLFGTREMRILILGLDGAGKTTILYRLQVGEVVTIPTIGFNVETVYKNLKFQVWDLGG QTSIRPYWRCYYSNTDAVIYVVDSCDRDRIGISKSELVAMLEEEELRKAILVVFANKQDMEQAMTSSEMA NSLGLPALKDRKWQIFKTSATKGTGLDEAMEWL VETLKS RQ  TRTRPLEQKLISEEDLAANDILDYKDDDDKV
Tag:	C-Myc/DDK
Purity:	> 80% as determined by SDS-PAGE and Coomassie blue staining
Concentration:	>0.05 µg/µL as determined by microplate BCA method
Labeling Method:	Labeled with [U- 13C6, 15N4]-L-Arginine and [U- 13C6, 15N2]-L-Lysine
Buffer:	25 mM Tris-HCl, 100 mM glycine, pH 7.3
Storage:	Store at -80°C. Avoid repeated freeze-thaw cycles.
Stability:	Stable for 3 months from receipt of products under proper storage and handling conditions.
RefSeq:	<u><a href="#">NP_001168</a></u>
RefSeq Size:	3253
RefSeq ORF:	543
Synonyms:	ARFL1
Locus ID:	400
UniProt ID:	<u><a href="#">P40616</a></u>

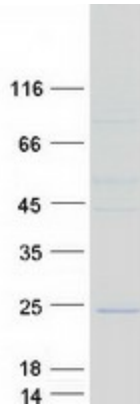


[View online »](#)

Cytogenetics: 12q23.2

**Summary:** The protein encoded by this gene belongs to the ARL (ADP-ribosylation factor-like) family of proteins, which are structurally related to ADP-ribosylation factors (ARFs). ARFs, described as activators of cholera toxin (CT) ADP-ribosyltransferase activity, regulate intracellular vesicular membrane trafficking, and stimulate a phospholipase D (PLD) isoform. Although, ARL proteins were initially thought not to activate CT or PLD, later work showed that they are weak stimulators of PLD and CT in a phospholipid dependent manner. Alternative splicing results in multiple transcript variants encoding different isoforms. [provided by RefSeq, Jul 2014]

### Product images:



Coomassie blue staining of purified ARL1 protein (Cat# [TP302698]). The protein was produced from HEK293T cells transfected with ARL1 cDNA clone (Cat# [RC202698]) using MegaTran 2.0 (Cat# [TT210002]).