

Product datasheet for PH302689

PREI3 (MOB4) (NM_199482) Human Mass Spec Standard

Product data:

Product Type:	Mass Spec Standards
Description:	MOBKL3 MS Standard C13 and N15-labeled recombinant protein (NP_955776)
Species:	Human
Expression Host:	HEK293
Expression cDNA Clone or AA Sequence:	RC202689
Predicted MW:	22.1 kDa
Protein Sequence:	>RC202689 representing NM_199482 Red=Cloning site Green=Tags(s) MVMAEGTAVLRRNRPGTKAQDFYNWPDESFDMDSTLAVQQYIQQNIRADCSNIDKILEPPEGQDEGVWK YEHLRQFCLELNGLAVKLQSECHPDTCTQMTATEQWIFLCAAHKTPKECPAIDYTRHTLDGAACLLNSNK YFPSRVSIKESSVAKLGSVCRRIYRIFSHAYFHRQIFDEYENETFLCHRFTKFMKYNLMSKDNLIVPI LEEEVQNSVSGESEA TRTRPLEQKLI SEEDLAANDILDYKDDDDKV
Tag:	C-Myc/DDK
Purity:	> 80% as determined by SDS-PAGE and Coomassie blue staining
Concentration:	>0.05 µg/µL as determined by microplate BCA method
Labeling Method:	Labeled with [U- ¹³ C ₆ , ¹⁵ N ₄]-L-Arginine and [U- ¹³ C ₆ , ¹⁵ N ₂]-L-Lysine
Buffer:	25 mM Tris-HCl, 100 mM glycine, pH 7.3
Storage:	Store at -80°C. Avoid repeated freeze-thaw cycles.
Stability:	Stable for 3 months from receipt of products under proper storage and handling conditions.
RefSeq:	NP_955776
RefSeq Size:	2698
RefSeq ORF:	675
Synonyms:	2C4D; CGI-95; MOB1; MOB3; MOBKL3; PHOCN; PREI3
Locus ID:	25843
UniProt ID:	Q9Y3A3 , Q9Y3A3-2 , Q9UI66

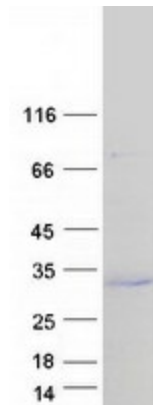


[View online »](#)

Cytogenetics: 2q33.1

Summary: This gene was identified based on its similarity with the mouse counterpart. Studies of the mouse counterpart suggest that the expression of this gene may be regulated during oocyte maturation and preimplantation following zygotic gene activation. Alternatively spliced transcript variants encoding distinct isoforms have been observed. Naturally occurring read-through transcription occurs between this locus and the neighboring locus HSPE1.[provided by RefSeq, Feb 2011]

Product images:



Coomassie blue staining of purified MOB4 protein (Cat# [TP302689]). The protein was produced from HEK293T cells transfected with MOB4 cDNA clone (Cat# [RC202689]) using MegaTran 2.0 (Cat# [TT210002]).