

Product datasheet for PH302681

NRAS (NM_002524) Human Mass Spec Standard

Product data:

Product Type:	Mass Spec Standards
Description:	NRAS MS Standard C13 and N15-labeled recombinant protein (NP_002515)
Species:	Human
Expression Host:	HEK293
Expression cDNA Clone or AA Sequence:	RC202681
Predicted MW:	21.2 kDa
Protein Sequence:	>RC202681 protein sequence Red =Cloning site Green =Tags(s) MTEYKLVVVGAGGVGKSALTIQLIQNHFVDEYDPTIEDSYRKQVVIDGETCLLDILDITAGQEEYSAMRDQ YMRTGEGFLCVFAINNSKSFADINLYREQIKRVKDSDDVPMVLVGNKCDLPTRTVDTKQAHELAKSYGIP FIETSAKTRQGVEDAFYTLVREIRQYRMKKLNSSDDGTQGCMLPCVVM TR TRPLEQ KL I SEED LA AND I LDYK DDDD KV
Tag:	C-Myc/DDK
Purity:	> 80% as determined by SDS-PAGE and Coomassie blue staining
Concentration:	>0.05 µg/µL as determined by microplate BCA method
Labeling Method:	Labeled with [U- 13C6, 15N4]-L-Arginine and [U- 13C6, 15N2]-L-Lysine
Buffer:	25 mM Tris-HCl, 100 mM glycine, pH 7.3
Storage:	Store at -80°C. Avoid repeated freeze-thaw cycles.
Stability:	Stable for 3 months from receipt of products under proper storage and handling conditions.
RefSeq:	NP_002515
RefSeq Size:	4454
RefSeq ORF:	567
Synonyms:	ALPS4; CMNS; N-ras; NCMS; NRAS1; NS6
Locus ID:	4893
UniProt ID:	P01111 , Q5U091



[View online »](#)

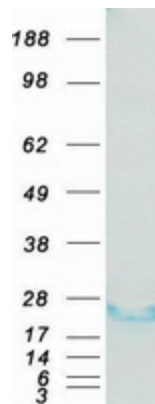
Cytogenetics: 1p13.2

Summary: This is an N-ras oncogene encoding a membrane protein that shuttles between the Golgi apparatus and the plasma membrane. This shuttling is regulated through palmitoylation and depalmitoylation by the ZDHHC9-GOLGA7 complex. The encoded protein, which has intrinsic GTPase activity, is activated by a guanine nucleotide-exchange factor and inactivated by a GTPase activating protein. Mutations in this gene have been associated with somatic rectal cancer, follicular thyroid cancer, autoimmune lymphoproliferative syndrome, Noonan syndrome, and juvenile myelomonocytic leukemia. [provided by RefSeq, Jun 2011]

Protein Families: Druggable Genome

Protein Pathways: Acute myeloid leukemia, Axon guidance, B cell receptor signaling pathway, Bladder cancer, Chemokine signaling pathway, Chronic myeloid leukemia, Endometrial cancer, ErbB signaling pathway, Fc epsilon RI signaling pathway, Gap junction, Glioma, GnRH signaling pathway, Insulin signaling pathway, Long-term depression, Long-term potentiation, MAPK signaling pathway, Melanogenesis, Melanoma, Natural killer cell mediated cytotoxicity, Neurotrophin signaling pathway, Non-small cell lung cancer, Pathways in cancer, Prostate cancer, Regulation of actin cytoskeleton, Renal cell carcinoma, T cell receptor signaling pathway, Thyroid cancer, Tight junction, VEGF signaling pathway

Product images:



Coomassie blue staining of purified NRAS protein (Cat# [TP302681]). The protein was produced from HEK293T cells transfected with NRAS cDNA clone (Cat# [RC202681]) using MegaTran 2.0 (Cat# [TT210002]).