

Product datasheet for PH302679

Apc10 (ANAPC10) (NM_014885) Human Mass Spec Standard

Product data:

Product Type:	Mass Spec Standards
Description:	ANAPC10 MS Standard C13 and N15-labeled recombinant protein (NP_055700)
Species:	Human
Expression Host:	HEK293
Expression cDNA Clone or AA Sequence:	RC202679
Predicted MW:	21.3 kDa
Protein Sequence:	>RC202679 protein sequence Red=Cloning site Green=Tags(s) MTPNKTTPPGADPKQLERTGTVREIGSQAVWSLSSCKPGFGVDQLRDDNLETYWQSDGSQPHLVNIQFRR KTTVKTLCIYADYKSDSYTPSKI SVRVGNFNHNLQEIRQLELVEPSGWIHVPLTDNHKKPTRTFMIQIA VLANHQNGRDTHMRQIKIYTPVEESSIGKFPRCTTIDFMMYRSIR TRTRPLEQKLISEEDLAANDILDYKDDDDKV
Tag:	C-Myc/DDK
Purity:	> 80% as determined by SDS-PAGE and Coomassie blue staining
Concentration:	>0.05 µg/µL as determined by microplate BCA method
Labeling Method:	Labeled with [U- ¹³ C ₆ , ¹⁵ N ₄]-L-Arginine and [U- ¹³ C ₆ , ¹⁵ N ₂]-L-Lysine
Buffer:	25 mM Tris-HCl, 100 mM glycine, pH 7.3
Storage:	Store at -80°C. Avoid repeated freeze-thaw cycles.
Stability:	Stable for 3 months from receipt of products under proper storage and handling conditions.
RefSeq:	NP_055700
RefSeq Size:	1457
RefSeq ORF:	555
Synonyms:	APC10; DOC1
Locus ID:	10393
UniProt ID:	Q9UM13



[View online »](#)

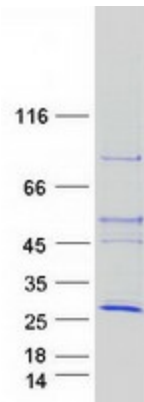
Cytogenetics: 4q31.21

Summary: ANAPC10 is a core subunit of the anaphase-promoting complex (APC), or cyclosome, a ubiquitin protein ligase that is essential for progression through the cell cycle. APC initiates sister chromatid separation by ubiquitinating the anaphase inhibitor securin (PTTG1; MIM 604147) and triggers exit from mitosis by ubiquitinating cyclin B (CCNB1; MIM 123836), the activating subunit of cyclin-dependent kinase-1 (CDK1; MIM 116940) (summary by Wendt et al., 2001 [PubMed 11524682]).[supplied by OMIM, Feb 2011]

Protein Families: Druggable Genome

Protein Pathways: Cell cycle, Oocyte meiosis, Progesterone-mediated oocyte maturation, Ubiquitin mediated proteolysis

Product images:



Coomassie blue staining of purified ANAPC10 protein (Cat# [TP302679]). The protein was produced from HEK293T cells transfected with ANAPC10 cDNA clone (Cat# [RC202679]) using MegaTran 2.0 (Cat# [TT210002]).