

## Product datasheet for PH302659

### MRPS18C (NM\_016067) Human Mass Spec Standard

#### Product data:

Product Type:	Mass Spec Standards
Description:	MRPS18C MS Standard C13 and N15-labeled recombinant protein (NP_057151)
Species:	Human
Expression Host:	HEK293
Expression cDNA Clone or AA Sequence:	RC202659
Predicted MW:	15.8 kDa
Protein Sequence:	>RC202659 protein sequence Red=Cloning site Green=Tags(s)  MAAVVAVCGGLGRKKLTHLVTAAVSLTHPGTHTVLWRRGCSQVSSNEDLPISMENPYKEPLKCKILCGK HVDYKNVQLLSQFVSPFTGCIYGRHITGLCGKKQKEITKAIKRAQIMGFMPVITYKDPAYLKDPKVCNIRY RE  TRTRPLEQKLI SEEDLAANDILDYKDDDDKV
Tag:	C-Myc/DDK
Purity:	> 80% as determined by SDS-PAGE and Coomassie blue staining
Concentration:	>0.05 µg/µL as determined by microplate BCA method
Labeling Method:	Labeled with [U- <sup>13</sup> C <sub>6</sub> , <sup>15</sup> N <sub>4</sub> ]-L-Arginine and [U- <sup>13</sup> C <sub>6</sub> , <sup>15</sup> N <sub>2</sub> ]-L-Lysine
Buffer:	25 mM Tris-HCl, 100 mM glycine, pH 7.3
Storage:	Store at -80°C. Avoid repeated freeze-thaw cycles.
Stability:	Stable for 3 months from receipt of products under proper storage and handling conditions.
RefSeq:	<a href="#">NP_057151</a>
RefSeq Size:	1101
RefSeq ORF:	426
Synonyms:	CGI-134; MRP-S18-1; MRP-S18-c; MRPS18-1; mrps18-c; S18mt-c
Locus ID:	51023
UniProt ID:	<a href="#">Q9Y3D5</a>

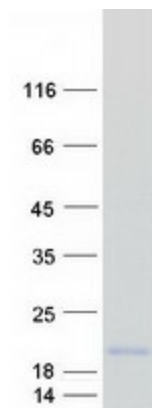


[View online »](#)

**Cytogenetics:** 4q21.23

**Summary:** Mammalian mitochondrial ribosomal proteins are encoded by nuclear genes and help in protein synthesis within the mitochondrion. Mitochondrial ribosomes (mitoribosomes) consist of a small 28S subunit and a large 39S subunit. They have an estimated 75% protein to rRNA composition compared to prokaryotic ribosomes, where this ratio is reversed. Another difference between mammalian mitoribosomes and prokaryotic ribosomes is that the latter contain a 5S rRNA. Among different species, the proteins comprising the mitoribosome differ greatly in sequence, and sometimes in biochemical properties, which prevents easy recognition by sequence homology. This gene encodes a 28S subunit protein that belongs to the ribosomal protein S18P family. The encoded protein is one of three that has significant sequence similarity to bacterial S18 proteins. The primary sequences of the three human mitochondrial S18 proteins are no more closely related to each other than they are to the prokaryotic S18 proteins. Pseudogenes corresponding to this gene are found on chromosomes 8p, 12p, 15q, and 22q. [provided by RefSeq, Jul 2008]

**Product images:**



Coomassie blue staining of purified MRPS18C protein (Cat# [TP302659]). The protein was produced from HEK293T cells transfected with MRPS18C cDNA clone (Cat# [RC202659]) using MegaTran 2.0 (Cat# [TT210002]).