

## Product datasheet for PH302658

### RPS27L (NM\_015920) Human Mass Spec Standard

#### Product data:

Product Type:	Mass Spec Standards
Description:	RPS27L MS Standard C13 and N15-labeled recombinant protein (NP_057004)
Species:	Human
Expression Host:	HEK293
Expression cDNA Clone or AA Sequence:	RC202658
Predicted MW:	9.5 kDa
Protein Sequence:	>RC202658 protein sequence <b>Red</b> =Cloning site <b>Green</b> =Tags(s)  MPLARDLLHPSLEEEKHKHEKRLVQSPNSYFMDVKCPGCKYKITTTFVSHAQTVVLCVGCSTVLCQPTGGK ARLTEGCSFRRKQH  <b>TR</b> TRPLEQKLISEEDLAANDILDYKDDDDKV
Tag:	C-Myc/DDK
Purity:	> 80% as determined by SDS-PAGE and Coomassie blue staining
Concentration:	>0.05 µg/µL as determined by microplate BCA method
Labeling Method:	Labeled with [U- 13C6, 15N4]-L-Arginine and [U- 13C6, 15N2]-L-Lysine
Buffer:	25 mM Tris-HCl, 100 mM glycine, pH 7.3
Storage:	Store at -80°C. Avoid repeated freeze-thaw cycles.
Stability:	Stable for 3 months from receipt of products under proper storage and handling conditions.
RefSeq:	<a href="#">NP_057004</a>
RefSeq Size:	1084
RefSeq ORF:	252
Locus ID:	51065
UniProt ID:	<a href="#">Q71UM5</a>
Cytogenetics:	15q22.2

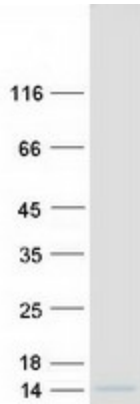


[View online »](#)

**Summary:** This gene encodes a protein sharing 96% amino acid similarity with ribosomal protein S27, which suggests the encoded protein may be a component of the 40S ribosomal subunit. [provided by RefSeq, Jul 2008]

**Protein Pathways:** Ribosome

**Product images:**



Coomassie blue staining of purified RPS27L protein (Cat# [TP302658]). The protein was produced from HEK293T cells transfected with RPS27L cDNA clone (Cat# [RC202658]) using MegaTran 2.0 (Cat# [TT210002]).