

Product datasheet for PH302650

RING1 (NM_002931) Human Mass Spec Standard

Product data:

Product Type:	Mass Spec Standards
Description:	RING1 MS Standard C13 and N15-labeled recombinant protein (NP_002922)
Species:	Human
Expression Host:	HEK293
Expression cDNA Clone or AA Sequence:	RC202650
Predicted MW:	42.4 kDa
Protein Sequence:	>RC202650 protein sequence Red=Cloning site Green=Tags(s)

MTTPANAQNASKTWELSLYELHRTPEAIMDGTETIAVSPRSLHSELMCPICLDMLKNTMTTKECLHRFCS
DCIVTALRSGNKECPTCRKLVSKRSLRPDPNFDALISKIYPSREEYEAHQDRVLIIRLIRLHNQALSSS
IEEGLRMQAMHRAQRVRRPIPGSDQTTTMSGGEGEPGEGEGDGEDVSSDSAPDSAPGPAPKRPRGGGAGG
SSVGTGGGGTGGVGGGAGSEDSGDRGGTLGGGTLPSPPPGAPSPPEPGGEIELVFRPHPLLVEKGEYCQ
TRYVKTTGNATVDHL SKYLALRIALERRQQEAGEPGGPGGGASDTGGPDGCGGEGGGAGGGDGPEEPAL
PSLEGVSEKQYTIYIAPGGGAFTTLNGSLTLELVNEKFWKVSRLPLELCYAPT KDPK

TRTRPLEQKLI SEEDLAANDILDYKDDDDKV

Tag:	C-Myc/DDK
Purity:	> 80% as determined by SDS-PAGE and Coomassie blue staining
Concentration:	>0.05 µg/µL as determined by microplate BCA method
Labeling Method:	Labeled with [U- ¹³ C ₆ , ¹⁵ N ₄]-L-Arginine and [U- ¹³ C ₆ , ¹⁵ N ₂]-L-Lysine
Buffer:	25 mM Tris-HCl, 100 mM glycine, pH 7.3
Storage:	Store at -80°C. Avoid repeated freeze-thaw cycles.
Stability:	Stable for 3 months from receipt of products under proper storage and handling conditions.
RefSeq:	NP_002922
RefSeq Size:	1744
RefSeq ORF:	1218
Synonyms:	RING1A; RNF1
Locus ID:	6015



[View online »](#)

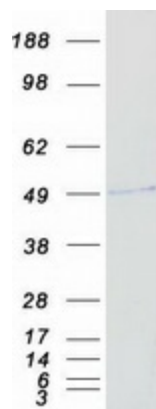
UniProt ID: [Q06587](#), [A0A1U9X8F2](#)

Cytogenetics: 6p21.32

Summary: This gene belongs to the RING finger family, members of which encode proteins characterized by a RING domain, a zinc-binding motif related to the zinc finger domain. The gene product can bind DNA and can act as a transcriptional repressor. It is associated with the multimeric polycomb group protein complex. The gene product interacts with the polycomb group proteins BMI1, EDR1, and CBX4, and colocalizes with these proteins in large nuclear domains. It interacts with the CBX4 protein via its glycine-rich C-terminal domain. The gene maps to the HLA class II region, where it is contiguous with the RING finger genes FABGL and HKE4. [provided by RefSeq, Jul 2008]

Protein Families: Druggable Genome, Transcription Factors

Product images:



Coomassie blue staining of purified RING1 protein (Cat# [TP302650]). The protein was produced from HEK293T cells transfected with RING1 cDNA clone (Cat# [RC202650]) using MegaTran 2.0 (Cat# [TT210002]).