

Product datasheet for PH302640

MAD2L1 binding protein (MAD2L1BP) (NM_014628) Human Mass Spec Standard

Product data:

Product Type:	Mass Spec Standards
Description:	MAD2L1BP MS Standard C13 and N15-labeled recombinant protein (NP_055443)
Species:	Human
Expression Host:	HEK293
Expression cDNA Clone or AA Sequence:	RC202640
Predicted MW:	31.1 kDa
Protein Sequence:	>RC202640 protein sequence Red=Cloning site Green=Tags(s) MAAPEAEVLSSAAYPDLEWYEKSEETHASQIELLETSSTQEPLNASEAF CPRDCMVPVVFPGPVSQEGCC QFTCELLKHIMYQRQQLPLPYEQLKHFYRKPSPQAEMLKKKPRATTEVSSRKCQALAELESVLSHLED FFARTLVPRVLILLGGNALSPKEFYELDL SLLAPYSVDQSLSTAACLRRLFRAIFMADAFSELQAPPLMG TVVMAQGHRCGEDWFRPKLNRYVPSRGHKLTVTLSCGRPSIRTTAWEDYIWFQAPVTFKGFRE TRTRPLEQKLI SEEDLAANDILDYKDDDDKV
Tag:	C-Myc/DDK
Purity:	> 80% as determined by SDS-PAGE and Coomassie blue staining
Concentration:	>0.05 µg/µL as determined by microplate BCA method
Labeling Method:	Labeled with [U- 13C6, 15N4]-L-Arginine and [U- 13C6, 15N2]-L-Lysine
Buffer:	25 mM Tris-HCl, 100 mM glycine, pH 7.3
Storage:	Store at -80°C. Avoid repeated freeze-thaw cycles.
Stability:	Stable for 3 months from receipt of products under proper storage and handling conditions.
RefSeq:	NP_055443
RefSeq Size:	1283
RefSeq ORF:	822
Synonyms:	CMT2
Locus ID:	9587
UniProt ID:	Q15013



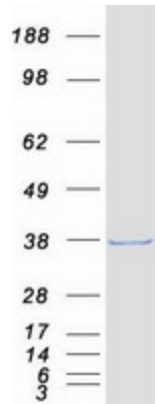
[View online »](#)

Cytogenetics: 6p21.1

Summary: The protein encoded by this gene was identified as a binding protein of the MAD2 mitotic arrest deficient-like 1 (MAD2/MAD2L1). MAD2 is a key component of the spindle checkpoint that delays the onset of anaphase until all the kinetochores are attached to the spindle. This protein may interact with the spindle checkpoint and coordinate cell cycle events in late mitosis. Alternatively spliced transcript variants encoding distinct isoforms have been observed. [provided by RefSeq, Jul 2008]

Protein Families: Druggable Genome

Product images:



Coomassie blue staining of purified MAD2L1BP protein (Cat# [TP302640]). The protein was produced from HEK293T cells transfected with MAD2L1BP cDNA clone (Cat# [RC202640]) using MegaTran 2.0 (Cat# [TT210002]).