

Product datasheet for PH302631

CRMP5 (DPYSL5) (NM_020134) Human Mass Spec Standard

Product data:

Product Type:	Mass Spec Standards
Description:	DPYSL5 MS Standard C13 and N15-labeled recombinant protein (NP_064519)
Species:	Human
Expression Host:	HEK293
Expression cDNA Clone or AA Sequence:	RC202631
Predicted MW:	61.4 kDa
Protein Sequence:	>RC202631 protein sequence Red=Cloning site Green=Tags(s)

MLANSASVRILIKGGKVVNDCTHEADVYIENGIQQVGRELMIPGGAKVIDATGKLVIPGGIDTSTHFH
QTFMNATCVDDFYHGTKAALVGGTMTIIGHVLPDKETSLVDAYEKCRGLADPKVCCDYALHVGITWWAPK
VKAEMETLVREKGVNSFQMFMTYKDLMLRDELYQVLHACKDIGAIARVHAENGELVAEGAKEALDLGI
TGPEGIEISRPEELEAEATHRVITIANRTHCPIYLVNVSSISAGDVIAAAKMQGKVVLAETTTAATLTG
LHYHQDWSHAAAYVTPPLRLDTNTSTYLSLLANDTLNIVASDHRPFTTKQKAMGKEDFTKIPHGVS
VQDRMSVIWERGTVGGKMDENRFVAVTSSNAKLLNL YPRKGRIIPGADADVVDPEATKISASTQVQ
GGDFNL YENMRCHGVPLVTISRGRVYENGVMCAEGTGKFCPLRSFPDVTYKLVQREKTLKVRGVDRT
PYLGDVAVVVHPGKEMGTPLADTPTRPVTRHGMRLHESSFSLSGSQIDDHVPKRASARILAPPGGRS
SGIW

TRTRPLEQKLISEEDLAANDILDYKDDDDKV

Tag:	C-Myc/DDK
Purity:	> 80% as determined by SDS-PAGE and Coomassie blue staining
Concentration:	>0.05 µg/µL as determined by microplate BCA method
Labeling Method:	Labeled with [U- ¹³ C ₆ , ¹⁵ N ₄]-L-Arginine and [U- ¹³ C ₆ , ¹⁵ N ₂]-L-Lysine
Buffer:	25 mM Tris-HCl, 100 mM glycine, pH 7.3
Storage:	Store at -80°C. Avoid repeated freeze-thaw cycles.
Stability:	Stable for 3 months from receipt of products under proper storage and handling conditions.
RefSeq:	NP_064519
RefSeq Size:	5225
RefSeq ORF:	1692



[View online »](#)

Synonyms: CRAM; CRMP-5; CRMP5; CV2; Ulip6

Locus ID: 56896

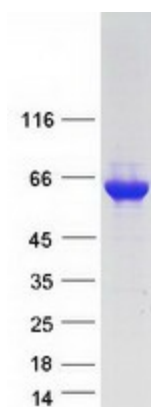
UniProt ID: [Q9BPU6](#)

Cytogenetics: 2p23.3

Summary: This gene encodes a member of the CRMP (collapsing response mediator protein) family thought to be involved in neural development. Antibodies to the encoded protein were found in some patients with neurologic symptoms who had paraneoplastic syndrome. A pseudogene of this gene is found on chromosome 11. Multiple alternatively spliced variants, encoding the same protein, have been identified. [provided by RefSeq, Dec 2011]

Protein Pathways: Axon guidance

Product images:



Coomassie blue staining of purified DPYSL5 protein (Cat# [TP302631]). The protein was produced from HEK293T cells transfected with DPYSL5 cDNA clone (Cat# [RC202631]) using MegaTran 2.0 (Cat# [TT210002]).