

Product datasheet for PH302620

CSRP2BP (KAT14) (NM_177926) Human Mass Spec Standard

Product data:

Product Type:	Mass Spec Standards
Description:	CSRP2BP MS Standard C13 and N15-labeled recombinant protein (NP_808779)
Species:	Human
Expression Host:	HEK293
Expression cDNA Clone or AA Sequence:	RC202620
Predicted MW:	74.3 kDa
Protein Sequence:	>RC202620 protein sequence Red =Cloning site Green =Tags(s)

MLAMYNLSLEGSGRQGYFRWKEDICAFIEKHWTFLGNRKKTSTWWSTVAGCLSVGSPMYFRSGAQEFGE
PGWKKLVHNKPPTMKPEGEKLSASTLKIKAAASKPTLDPIITVEGLRKRASRNPVESAMELKEKRSRTQEA
KDIRRAQKEAAGFLDRSTSSTPVKFISRGRPDVILEKGEVIDFSSLSSTDRTPLTSPSPSPSLDFSAPG
TPASHSATPSLLSEADLIPDVMPPQALFHDDDEMEGDGVIDPGMEYVPPAGSVASGPVVGGRKKVRGPE
QIKQVEVESEEEKPDRMDIDSEDTSNTSLQTRAREKRKPQLEKDTKPKEPRYTPVSIYEEKLLLKRLEAC
PGAVAMTEARRLKRKLIVRQAKRDRGLPLFDLDQVVNAALLVDGIYGAKEGGISRLPAGQATYRTTCQ
DFRILDRYQTSLSRKGFRHQTTKFLYRLVGSEDMAVDQSI VSPYTSRILKPYIRRDYETKPKLQLLSQ
IRSHLHRSDPHWTPEPDAPLDYCYVRPNHIPTINSMCQEFFWPGIDLSECLQYPDFSVVLYKKVIAFG
FMVPDVKYNEAYISFLFVHPEWRRAGIATFMIYHLIQTGMDVTLHVSASNPAMLLYQKFGFKTEEYVL
DFYDKYYPLESTECKHAFFLRLRR

TRTRPLEEQKLISEEDLAANDILDYKDDDDKV

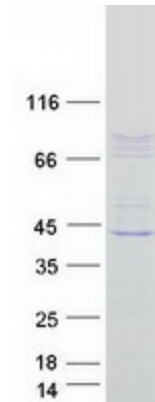
Tag:	C-Myc/DDK
Purity:	> 80% as determined by SDS-PAGE and Coomassie blue staining
Concentration:	>0.05 µg/µL as determined by microplate BCA method
Labeling Method:	Labeled with [U- ¹³ C ₆ , ¹⁵ N ₄]-L-Arginine and [U- ¹³ C ₆ , ¹⁵ N ₂]-L-Lysine
Buffer:	25 mM Tris-HCl, 100 mM glycine, pH 7.3
Storage:	Store at -80°C. Avoid repeated freeze-thaw cycles.
Stability:	Stable for 3 months from receipt of products under proper storage and handling conditions.
RefSeq:	<u>NP_808779</u>
RefSeq Size:	3137



[View online »](#)

RefSeq ORF:	1962
Synonyms:	CRP2 binding partner; CRP2 binding protein; CRP2BP; CSRP2 binding protein; cysteine rich protein 2 binding protein; dJ717M23.1; MGC15388; PRO1194
Locus ID:	57325
UniProt ID:	Q9H8E8
Cytogenetics:	20p11.23
Summary:	CSRP2 is a protein containing two LIM domains, which are double zinc finger motifs found in proteins of diverse function. CSRP2 and some related proteins are thought to act as protein adapters, bridging two or more proteins to form a larger protein complex. The protein encoded by this gene binds to one of the LIM domains of CSRP2 and contains an acetyltransferase domain. Although the encoded protein has been detected in the cytoplasm, it is predominantly a nuclear protein. Alternatively spliced transcript variants have been described. [provided by RefSeq, Jun 2011]

Product images:



Coomassie blue staining of purified CSRP2BP protein (Cat# [TP302620]). The protein was produced from HEK293T cells transfected with CSRP2BP cDNA clone (Cat# [RC202620]) using MegaTran 2.0 (Cat# [TT210002]).