

Product datasheet for PH302615

FBXO27 (NM_178820) Human Mass Spec Standard

Product data:

Product Type:	Mass Spec Standards
Description:	FBXO27 MS Standard C13 and N15-labeled recombinant protein (NP_849142)
Species:	Human
Expression Host:	HEK293
Expression cDNA Clone or AA Sequence:	RC202615
Predicted MW:	31.4 kDa
Protein Sequence:	>RC202615 representing NM_178820 Red=Cloning site Green=Tags(s) MGASVSRGRAARVPAPPEPEEALDLSQLPPELLLVVLSHVPPRTLLGRCRQVCRGWRALVDGQALWLLI LARDHGATGRALLHLARSCQSPARNARPCPLGRFCARRPIGRNLIRNPGQEQGLRKWMVQHGGDGVVVEE NRTTVPGAPSQTCFVTSFSWCCKKQVLDLEEEGLWPELLDSGRIEICVSDWWGARHDSGCMYRLLVQLLD ANQTVLDKFSAPDPPIPQWNNACLHVTHVFSNIKMGVRFVSFEHRGQDTQFWAGHYGARVTNSSVIVRV RLS TRTRPLEQKLI SEEDLAANDILDYKDDDDKV
Tag:	C-Myc/DDK
Purity:	> 80% as determined by SDS-PAGE and Coomassie blue staining
Concentration:	>0.05 µg/µL as determined by microplate BCA method
Labeling Method:	Labeled with [U- ¹³ C ₆ , ¹⁵ N ₄]-L-Arginine and [U- ¹³ C ₆ , ¹⁵ N ₂]-L-Lysine
Buffer:	25 mM Tris-HCl, 100 mM glycine, pH 7.3
Storage:	Store at -80°C. Avoid repeated freeze-thaw cycles.
Stability:	Stable for 3 months from receipt of products under proper storage and handling conditions.
RefSeq:	NP_849142
RefSeq Size:	2338
RefSeq ORF:	849
Synonyms:	FBG5; Fbx27
Locus ID:	126433



[View online »](#)

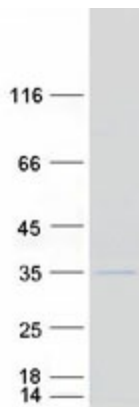
UniProt ID: [Q8NI29](#), [A0A384MR61](#)

Cytogenetics: 19q13.2

Summary: Members of the F-box protein family, such as FBXO27, are characterized by an approximately 40-amino acid F-box motif. SCF complexes, formed by SKP1 (MIM 601434), cullin (see CUL1; MIM 603134), and F-box proteins, act as protein-ubiquitin ligases. F-box proteins interact with SKP1 through the F box, and they interact with ubiquitination targets through other protein interaction domains (Jin et al., 2004 [PubMed 15520277]).[supplied by OMIM, Mar 2008]

Protein Families: Druggable Genome

Product images:



Coomassie blue staining of purified FBXO27 protein (Cat# [TP302615]). The protein was produced from HEK293T cells transfected with FBXO27 cDNA clone (Cat# [RC202615]) using MegaTran 2.0 (Cat# [TT210002]).