

Product datasheet for PH302606

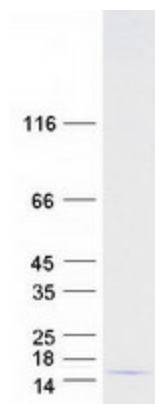
CHCHD5 (NM_032309) Human Mass Spec Standard

Product data:

Product Type:	Mass Spec Standards
Description:	CHCHD5 MS Standard C13 and N15-labeled recombinant protein (NP_115685)
Species:	Human
Expression Host:	HEK293
Expression cDNA Clone or AA Sequence:	RC202606
Predicted MW:	12.4 kDa
Protein Sequence:	>RC202606 protein sequence Red =Cloning site Green =Tags(s) MQAALEVTARYCGRELEQYGQCVAAKPESWQRDCHYLKMSIAQCTSSHPIIRQIRQACAQPFEAFEECLR QNEAAVGNCAEHMRRFLQCAEQVPPRSPATVEAQPLPAS TR TRPLEQKLISEEDLAANDILDYKDDDDKV
Tag:	C-Myc/DDK
Purity:	> 80% as determined by SDS-PAGE and Coomassie blue staining
Concentration:	>0.05 µg/µL as determined by microplate BCA method
Labeling Method:	Labeled with [U- 13C6, 15N4]-L-Arginine and [U- 13C6, 15N2]-L-Lysine
Buffer:	25 mM Tris-HCl, 100 mM glycine, pH 7.3
Storage:	Store at -80°C. Avoid repeated freeze-thaw cycles.
Stability:	Stable for 3 months from receipt of products under proper storage and handling conditions.
RefSeq:	NP_115685
RefSeq Size:	698
RefSeq ORF:	330
Synonyms:	C2orf9; CHTM1; MIC14; MIX14
Locus ID:	84269
UniProt ID:	Q9BSY4 , A0A2U9EWT9
Cytogenetics:	2q14.1



[View online »](#)

Product images:

Coomassie blue staining of purified CHCHD5 protein (Cat# [TP302606]). The protein was produced from HEK293T cells transfected with CHCHD5 cDNA clone (Cat# [RC202606]) using MegaTran 2.0 (Cat# [TT210002]).