

Product datasheet for PH302573

IGFBP2 (NM_000597) Human Mass Spec Standard

Product data:

Product Type:	Mass Spec Standards
Description:	IGFBP2 MS Standard C13 and N15-labeled recombinant protein (NP_000588)
Species:	Human
Expression Host:	HEK293
Expression cDNA Clone or AA Sequence:	RC202573
Predicted MW:	35 kDa
Protein Sequence:	>RC202573 representing NM_000597 Red=Cloning site Green=Tags(s) MLPRVGC PALPLPPP LLLPLLLLLL LGASGGGGARAEVLFRCPPCTPERLAACGPPPVAPPAVAAV AGGARMPCAELVREPGCCSVCARLEGEACGVYTPRCGQGLRCYPHPGSELPLQALVMGEGTCEKRRDA EYGASPEQVADNGDDHSEGGLVENHVDSTMNMLGGGSAGRKPLKSGMKELAVFREKVTEQHRQMGKGGK HHLGLEEKPLRPPPARTPCQQELDQVLERISTMRLPDERGPLEHLYSLHIPNCDKHGLYNLKQCKMSLN GQRGECWCVPNTGKLIQGAPTIRGDPECHLFYNEQQEARGVHTQRMQ TRTRPLEQKLISEEDLAANDILDYKDDDDKV
Tag:	C-Myc/DDK
Purity:	> 80% as determined by SDS-PAGE and Coomassie blue staining
Concentration:	>0.05 µg/µL as determined by microplate BCA method
Labeling Method:	Labeled with [U- ¹³ C ₆ , ¹⁵ N ₄]-L-Arginine and [U- ¹³ C ₆ , ¹⁵ N ₂]-L-Lysine
Buffer:	25 mM Tris-HCl, 100 mM glycine, pH 7.3
Storage:	Store at -80°C. Avoid repeated freeze-thaw cycles.
Stability:	Stable for 3 months from receipt of products under proper storage and handling conditions.
RefSeq:	<u>NP_000588</u>
RefSeq Size:	1439
RefSeq ORF:	984
Synonyms:	IBP2; IGF-BP53
Locus ID:	3485



[View online »](#)

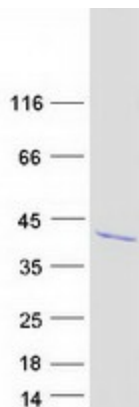
UniProt ID: [P18065](#)

Cytogenetics: 2q35

Summary: The protein encoded by this gene is one of six similar proteins that bind insulin-like growth factors I and II (IGF-I and IGF-II). The encoded protein can be secreted into the bloodstream, where it binds IGF-I and IGF-II with high affinity, or it can remain intracellular, interacting with many different ligands. High expression levels of this protein promote the growth of several types of tumors and may be predictive of the chances of recovery of the patient. Several transcript variants, one encoding a secreted isoform and the others encoding nonsecreted isoforms, have been found for this gene. [provided by RefSeq, Sep 2015]

Protein Families: Adult stem cells, Druggable Genome, Embryonic stem cells, ES Cell Differentiation/IPS, Secreted Protein

Product images:



Coomassie blue staining of purified IGFBP2 protein (Cat# [TP302573]). The protein was produced from HEK293T cells transfected with IGFBP2 cDNA clone (Cat# [RC202573]) using MegaTran 2.0 (Cat# [TT210002]).