

Product datasheet for PH302560

TTC11 (FIS1) (NM_016068) Human Mass Spec Standard

Product data:

Product Type:	Mass Spec Standards
Description:	FIS1 MS Standard C13 and N15-labeled recombinant protein (NP_057152)
Species:	Human
Expression Host:	HEK293
Expression cDNA Clone or AA Sequence:	RC202560
Predicted MW:	16.9 kDa
Protein Sequence:	>RC202560 protein sequence Red=Cloning site Green=Tags(s) MEAVLNELVSVEDLLKFEKKFQSEKAAGSVSKSTQFEYAWCLVRSKYND DIRKGI V LLEELL PKGSKEEQ RDYVFYLA VGN YRL KEYEKALKYVRGLLQT EPQNNQAKELERLIDKAMKKDGLVGM AIVGGMALGVAGLA GLIGLAVSKSKS TRTRPLEQKLI SEEDLAANDILDYKDDDDKV
Tag:	C-Myc/DDK
Purity:	> 80% as determined by SDS-PAGE and Coomassie blue staining
Concentration:	>0.05 µg/µL as determined by microplate BCA method
Labeling Method:	Labeled with [U- ¹³ C ₆ , ¹⁵ N ₄]-L-Arginine and [U- ¹³ C ₆ , ¹⁵ N ₂]-L-Lysine
Buffer:	25 mM Tris-HCl, 100 mM glycine, pH 7.3
Storage:	Store at -80°C. Avoid repeated freeze-thaw cycles.
Stability:	Stable for 3 months from receipt of products under proper storage and handling conditions.
RefSeq:	NP_057152
RefSeq Size:	785
RefSeq ORF:	456
Synonyms:	CGI-135; TTC11
Locus ID:	51024
UniProt ID:	Q9Y3D6



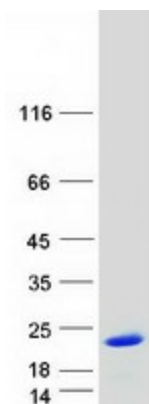
[View online »](#)

Cytogenetics: 7q22.1

Summary: The balance between fission and fusion regulates the morphology of mitochondria. TTC11 is a component of a mitochondrial complex that promotes mitochondrial fission (James et al., 2003 [PubMed 12783892]).[supplied by OMIM, Mar 2008]

Protein Families: Transmembrane

Product images:



Coomassie blue staining of purified FIS1 protein (Cat# [TP302560]). The protein was produced from HEK293T cells transfected with FIS1 cDNA clone (Cat# [RC202560]) using MegaTran 2.0 (Cat# [TT210002]).