

## Product datasheet for PH302558

### KREMEN2 (NM\_024507) Human Mass Spec Standard

#### Product data:

Product Type:	Mass Spec Standards
Description:	KREMEN2 MS Standard C13 and N15-labeled recombinant protein (NP_078783)
Species:	Human
Expression Host:	HEK293
Expression cDNA Clone or AA Sequence:	RC202558
Predicted MW:	44.4 kDa
Protein Sequence:	>RC202558 protein sequence Red=Cloning site Green=Tags(s)

MGTQALQGFLFLLFLLPLLQPRGASAGSLHSPGLSECFQVNGADYRGHQNRTGPRGAGRPCLFWDQTQQHS  
YSSASDPHGRWGLGAHNFCRNPDGDVQPWCYVAETEEGIYWRYCDIPSCHMPGYLGCFVDSGAPPALSGP  
SGTSTKLTVQVCLRFCRMKGYQLAGVEAGYACFCGSESDLARGRLAPATDCDQICFGHPGQLCGDGRGLG  
VYEVSVGSCQGNWTAPQGVIIYSPDFPDEYGPDRNC SWALGPPGALELTFRLFELADPRDRLELRDAASG  
SLLRAFDGARPPPSGPLRLGTAALLLTFRSDARGHAQGFALTYRGLQDAAEDPEAPEGSAQTPAAPLDGA  
NVSCSPRPGAPPAIIGGAVCWLREKGPRRWGLPGAPGEAGLCGTNSPEGWPCAPPGTPLRLVLPATGL

TRTRPLEQKLISEEDLAANDILDYKDDDDKV

Tag:	C-Myc/DDK
Purity:	> 80% as determined by SDS-PAGE and Coomassie blue staining
Concentration:	>0.05 µg/µL as determined by microplate BCA method
Labeling Method:	Labeled with [U- <sup>13</sup> C <sub>6</sub> , <sup>15</sup> N <sub>4</sub> ]-L-Arginine and [U- <sup>13</sup> C <sub>6</sub> , <sup>15</sup> N <sub>2</sub> ]-L-Lysine
Buffer:	25 mM Tris-HCl, 100 mM glycine, pH 7.3
Storage:	Store at -80°C. Avoid repeated freeze-thaw cycles.
Stability:	Stable for 3 months from receipt of products under proper storage and handling conditions.
RefSeq:	<u><a href="#">NP_078783</a></u>
RefSeq Size:	1989
RefSeq ORF:	1260
Synonyms:	KRM2
Locus ID:	79412



[View online »](#)

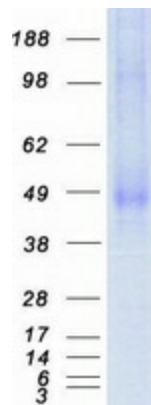
UniProt ID: [Q8NCW0](#), [Q53F67](#)

Cytogenetics: 16p13.3

**Summary:** This gene encodes a high-affinity dickkopf homolog 1 (DKK1) transmembrane receptor. A similar protein in mouse functions interacts with with DKK1 to block wingless (WNT)/beta-catenin signaling. The encoded protein forms a ternary membrane complex with DKK1 and the WNT receptor lipoprotein receptor-related protein 6 (LRP6), and induces rapid endocytosis and removal of LRP6 from the plasma membrane. It contains extracellular kringle, WSC, and CUB domains. Alternatively spliced transcript variants encoding distinct isoforms have been observed for this gene. [provided by RefSeq, Dec 2011]

**Protein Families:** Druggable Genome, Transmembrane

### Product images:



Coomassie blue staining of purified KREMEN2 protein (Cat# [TP302558]). The protein was produced from HEK293T cells transfected with KREMEN2 cDNA clone (Cat# [RC202558]) using MegaTran 2.0 (Cat# [TT210002]).