

Product datasheet for PH302532

Mesothelin (MSLN) (NM_005823) Human Mass Spec Standard

Product data:

Product Type:	Mass Spec Standards
Description:	MSLN MS Standard C13 and N15-labeled recombinant protein (NP_005814)
Species:	Human
Expression Host:	HEK293
Expression cDNA Clone or AA Sequence:	RC202532
Predicted MW:	67.9 kDa
Protein Sequence:	>Peptide sequence encoded by RC202532 Blue=ORF Red=Cloning site Green=Tag(s)

MALPTARPLLGSCGTPALGSELLFLLFSLGWQPSRTLGETGQAAPLDGVLANPPNISSLSPRQLLGFP
CAEVSGLSTERVRELAVALAQKNVKLSTEQLRCLAHRLSEPPEDLDALPLDLLLLFNPDFAFSGPQACTR
FFSRITKANVDLLPRGAPERQRLPAALACWVGRSLLSEADVRLGGLACDLPGRFVAESAIEVLLPRL
VSCPGPLDQDQQAARAALQGGPPYGGPSTWSVSTMDALRGLLPVLGQPIIRSIPQGIVAARQRSSR
DPSWRQPRTLPRFRREVEKTACPSGKKAREIDESLIFYKKWELEACVDAALLATQMDRVNAIPFTY
EQLDVLKHKLDLDELYPQGYPEVSIQHLGYLFLKMSPEDIRKWNVTSLKALLEVNKGHEMSPQVATLI
DRFVKGRGQLDKDLDLTLTAFYPGYLCSLSPEELSSVPPSSIWAVRPQDLDTCDPRQLDVLYPKARLAF
QNMNGSEYFVKIQSFLGGAPTEDLKALSQQNVSMDLATFMKLRDVAVLPLTVAEVQKLLGPHVEGLKAE
ERHRPVRDWILRQRQDDLDLGLGLQGGIPNGYLVDLSVQEQALSGTPCLLGGPVLTVLALLLASTLA
TRTRPLEQKLISEEDLAANDILDYKDDDDKV

Recombinant protein using RC202532 also available, [TP302532](#)

Tag:	C-Myc/DDK
Purity:	> 80% as determined by SDS-PAGE and Coomassie blue staining
Concentration:	>0.05 µg/µL as determined by microplate BCA method
Labeling Method:	Labeled with [U- 13C6, 15N4]-L-Arginine and [U- 13C6, 15N2]-L-Lysine
Buffer:	25 mM Tris-HCl, 100 mM glycine, pH 7.3
Storage:	Store at -80°C. Avoid repeated freeze-thaw cycles.
Stability:	Stable for 3 months from receipt of products under proper storage and handling conditions.
RefSeq:	NP_005814
RefSeq Size:	2197



[View online »](#)

RefSeq ORF: 1863

Synonyms: MPF; SMRP

Locus ID: 10232

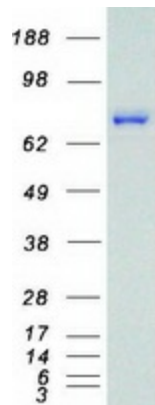
UniProt ID: [Q13421](#)

Cytogenetics: 16p13.3

Summary: This gene encodes a preproprotein that is proteolytically processed to generate two protein products, megakaryocyte potentiating factor and mesothelin. Megakaryocyte potentiating factor functions as a cytokine that can stimulate colony formation of bone marrow megakaryocytes. Mesothelin is a glycosylphosphatidylinositol-anchored cell-surface protein that may function as a cell adhesion protein. This protein is overexpressed in epithelial mesotheliomas, ovarian cancers and in specific squamous cell carcinomas. Alternative splicing results in multiple transcript variants, at least one of which encodes an isoform that is proteolytically processed. [provided by RefSeq, Feb 2016]

Protein Families: Druggable Genome, Secreted Protein, Transmembrane

Product images:



Coomassie blue staining of purified MSLN protein (Cat# [TP302532]). The protein was produced from HEK293T cells transfected with MSLN cDNA clone (Cat# [RC202532]) using MegaTran 2.0 (Cat# [TT210002]).