

## Product datasheet for PH302529

### NDUFAF7 (NM\_144736) Human Mass Spec Standard

#### Product data:

Product Type:	Mass Spec Standards
Description:	C2orf56 MS Standard C13 and N15-labeled recombinant protein (NP_653337)
Species:	Human
Expression Host:	HEK293
Expression cDNA Clone or AA Sequence:	RC202529
Predicted MW:	49.2 kDa
Protein Sequence:	>RC202529 protein sequence <span style="color: red;">Red</span> =Cloning site <span style="color: green;">Green</span> =Tags(s)

MSVLLRSLGPLCAVARAAIPFIWRGKYFSSGNEPAENPVTMLRHLMYKIKSTGPITVAEYMKEVLTNP  
 AKGYVYRDMLGEKGFITSPEISQIFGELLGIWFISEWMATGKSTAFQLVELGPGRGTLVGDILRVFTQ  
 LGSVLKNCDISVHLVEVSQKLSEIQALTLTKEKVPLERNAGSPVYMKGVTKSGIPISWYRDLHDVPGYS  
 FYLAHEFFDVLPHVKFQKTPQGWREVFDIDPQVSDKLRFLAPSATPAEAFIQHDETRDHVEVCPDAGV  
 IIEELSQRIALTGGAALVADYGHGDKTDTFRGFCDHKLHDVLIAPGTADLTADVDFSYLRRMAQGVAS  
 LGPIKQHTFLKNMGIDVRLKVLDDKSNEPSVRQQLQGYDMLMNPCKMGERFNFFALLPHQRLQGGRYQR  
 NARQSKPFASVVAGFSELAWQ

TRTRPLEQKLISEEDLAANDILDYKDDDDKV

Tag:	C-Myc/DDK
Purity:	> 80% as determined by SDS-PAGE and Coomassie blue staining
Concentration:	>0.05 µg/µL as determined by microplate BCA method
Labeling Method:	Labeled with [U- <sup>13</sup> C <sub>6</sub> , <sup>15</sup> N <sub>4</sub> ]-L-Arginine and [U- <sup>13</sup> C <sub>6</sub> , <sup>15</sup> N <sub>2</sub> ]-L-Lysine
Buffer:	25 mM Tris-HCl, 100 mM glycine, pH 7.3
Storage:	Store at -80°C. Avoid repeated freeze-thaw cycles.
Stability:	Stable for 3 months from receipt of products under proper storage and handling conditions.
RefSeq:	<u><a href="#">NP_653337</a></u>
RefSeq Size:	2221
RefSeq ORF:	1323
Synonyms:	C2orf56; MidA; PRO1853


[View online »](#)

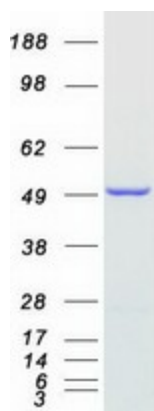
Locus ID: 55471

UniProt ID: [Q7L592](#)

Cytogenetics: 2p22.2

**Summary:** This gene encodes an assembly factor protein which helps in the assembly and stabilization of Complex I, a large multi-subunit enzyme in the mitochondrial respiratory chain. Complex I is involved in several physiological activities in the cell, including metabolite transport and ATP synthesis. The encoded protein is a methyltransferase which methylates Arg85 of a subunit of Complex I in the early stages of its assembly. A pseudogene related to this gene is located on chromosome 8. Alternative splicing results in multiple transcript variants. [provided by RefSeq, Sep 2016]

## Product images:



Coomassie blue staining of purified NDUFAF7 protein (Cat# [TP302529]). The protein was produced from HEK293T cells transfected with NDUFAF7 cDNA clone (Cat# [RC202529]) using MegaTran 2.0 (Cat# [TT210002]).