

Product datasheet for PH302524

PPPDE1 (DESI2) (NM_016076) Human Mass Spec Standard

Product data:

Product Type:	Mass Spec Standards
Description:	PPPDE1 MS Standard C13 and N15-labeled recombinant protein (NP_057160)
Species:	Human
Expression Host:	HEK293
Expression cDNA Clone or AA Sequence:	RC202524
Predicted MW:	21.4 kDa
Protein Sequence:	>RC202524 protein sequence Red=Cloning site Green=Tags(s) MGANQLVVLNVYDMYWMNEYTSSIGIGVFHSGIEVYGREFA YGGHPYPFSGIFEISPGNASELGETFKFK EAVVLGSTD FLEDDIEKIVEELGKEYKGNAYHLMHKNCNHFSSALSEILCGKEIPRWINRLAYFSSCIIPF LQSCLPKEWLTPAALQSSVSQELQDELEEAEDAAASASVASTAAGSRPGRHTKL TRTRPLEQKLISEEDLAANDILDYKDDDDKV
Tag:	C-Myc/DDK
Purity:	> 80% as determined by SDS-PAGE and Coomassie blue staining
Concentration:	>0.05 µg/µL as determined by microplate BCA method
Labeling Method:	Labeled with [U- 13C6, 15N4]-L-Arginine and [U- 13C6, 15N2]-L-Lysine
Buffer:	25 mM Tris-HCl, 100 mM glycine, pH 7.3
Storage:	Store at -80°C. Avoid repeated freeze-thaw cycles.
Stability:	Stable for 3 months from receipt of products under proper storage and handling conditions.
RefSeq:	NP_057160
RefSeq Size:	4109
RefSeq ORF:	582
Synonyms:	C1orf121; CGI-146; DESI; DeSI-2; DESI1; FAM152A; PNAS-4; PPPDE1
Locus ID:	51029
UniProt ID:	Q9BSY9 , A0A024R5P6

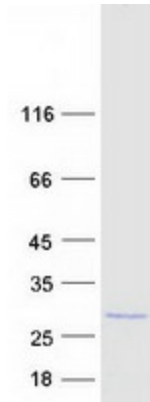


[View online »](#)

Cytogenetics: 1q44

Summary: Has deubiquitinating activity towards 'Lys-48'- and 'Lys-63'-linked polyubiquitin chains. Deubiquitinates 'Lys-48'-linked polyubiquitination of RPS7 leading to its stabilization (PubMed:28483520).[UniProtKB/Swiss-Prot Function]

Product images:



Coomassie blue staining of purified DESI2 protein (Cat# [TP302524]). The protein was produced from HEK293T cells transfected with DESI2 cDNA clone (Cat# [RC202524]) using MegaTran 2.0 (Cat# [TT210002]).