

Product datasheet for PH302474

TLE2 (NM_003260) Human Mass Spec Standard

Product data:

Product Type:	Mass Spec Standards
Description:	TLE2 MS Standard C13 and N15-labeled recombinant protein (NP_003251)
Species:	Human
Expression Host:	HEK293
Expression cDNA Clone or AA Sequence:	RC202474
Predicted MW:	79.8 kDa
Protein Sequence:	>RC202474 protein sequence Red=Cloning site Green=Tags(s)

MYPQGRHPTPLQSGQPFFKFSILEICDRIKEEFQFLQAQYHSLKLECEKLASEKTEMQRHYVMYEYMSYGL
 NIEMHKQAEIVKRLSGICAQIIPFLTQEHQQVQLQAVERAKQVTVGELNSLIGQQQLQPLSHHAPPVPLTP
 RPAGLVGGSATGLLALSGALAAQAQLAAAVKEDRAGVEAEGSRVERAPSRASASPSPPEESLVEEERPSGGG
 GGGKQRADEKEPSGYPYSEDEKSDYNLVVDEQDQSEPPSPATTPCGKVPICIPARRDLVDSASLASSLG
 SPLPRAKELILNDLPASTPASKSCDSSPPQDASTPGPSSASHLCQLAAKPAPSTDSVALRSPLTLSSPFT
 TSFSLGSHSTLNGDLVSPSSYVSLHLSPQVSSSVYGRSPVMAFESHPLRGSSVSSSLPSIPGGKPAYS
 FHVSADGQMOPVFPFSDALVGAGIPRHARQLHTLAHGEVVCVAVTISGSTQHVVYTGKGCVKVWDVGPQA
 KTPVAQLDCLNRDNYIRSKLLPDGRSLIVGGEASTLSIWDLAAPTPIKAELTSSAPACYALAVSPDAK
 VCFSCSDGNIIVWDLQNTMVRQFQGHDTGASCIDISDYGTRLWTGGLDNTVRCWDLREGRQLQQHDFS
 SQIFSLGHCPNQDWLAVGMESSNVEILHVRKPEKYQLHLHESCVLSLKFASCGRWFVSTGKDNLLNAWRT
 PYGASIFQSKESSVLSCDISRNNKYIVTGSQDKKATVYEVVY

TRTRPLEQKLISEEDLAANDILDYKDDDDKV

Tag:	C-Myc/DDK
Purity:	> 80% as determined by SDS-PAGE and Coomassie blue staining
Concentration:	>0.05 µg/µL as determined by microplate BCA method
Labeling Method:	Labeled with [U- 13C6, 15N4]-L-Arginine and [U- 13C6, 15N2]-L-Lysine
Buffer:	25 mM Tris-HCl, 100 mM glycine, pH 7.3
Storage:	Store at -80°C. Avoid repeated freeze-thaw cycles.
Stability:	Stable for 3 months from receipt of products under proper storage and handling conditions.
RefSeq:	<u>NP_003251</u>



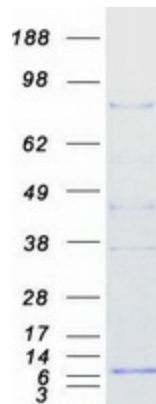
[View online »](#)

RefSeq Size: 2722
RefSeq ORF: 2229
Synonyms: ESG; ESG2; GRG2
Locus ID: 7089
UniProt ID: [Q04725](#)
Cytogenetics: 19p13.3

Summary: Transcriptional corepressor that binds to a number of transcription factors. Inhibits the transcriptional activation mediated by CTNNB1 and TCF family members in Wnt signaling. The effects of full-length TLE family members may be modulated by association with dominant-negative AES (By similarity).[UniProtKB/Swiss-Prot Function]

Protein Families: Transcription Factors

Product images:



Coomassie blue staining of purified TLE2 protein (Cat# [TP302474]). The protein was produced from HEK293T cells transfected with TLE2 cDNA clone (Cat# [RC202474]) using MegaTran 2.0 (Cat# [TT210002]).