

## Product datasheet for PH302464

### GRK6 (NM\_001004106) Human Mass Spec Standard

#### Product data:

Product Type:	Mass Spec Standards
Description:	GRK6 MS Standard C13 and N15-labeled recombinant protein (NP_001004106)
Species:	Human
Expression Host:	HEK293
Expression cDNA Clone or AA Sequence:	RC202464
Predicted MW:	65.8 kDa
Protein Sequence:	>RC202464 representing NM_001004106 Red=Cloning site Green=Tags(s)

MELENIVANTVLLKAREGGGNRKGSKKWRQMLQFPHISQCEELRLSLERDYHSLCERQPIGRLLFREF  
CATRPEL SRCVAFLDGVAEYVTPDDKRKACGRQLTQNFLSHTGPDLIPEVPRQLVTNCTQRLEQGPKD  
LFQELTRLTHEYLSVAPFADYLDLSIYFNRFQKWLERQPVTKNTFRQYRVLGKGGFGEVCACQVRATGK  
MYACKKLEKKRIKKRKGAMALNEKQILEKVNRFVVS LAYAYETKDALCLVLTLMNGGDLKFHIYHMGQ  
AGFPEARAVFYAAEICCGLEDLHRERIVYRDLKPENILLDDHGHIRISDLGLAVHVPEGQTIKGRVGTG  
YMAPEVVKNER YTFSPDWWALGCLLYEMIAGQSPFQQRKKKIKREEVERLVKEVPPEYSERFSPQARSLC  
SQLLCKDPAERL GCRGGSAREVKEHPLFKKLNFKRLGAGMLEPPFKPDPQAIYCKDVL DIEQFSTVKGVE  
LEPTDQDFYQKFATGVSVIPWQNE MVETEFCQELNVFGLDGSVPPDL DWKGQPPAPPKGLLQRLF SRQD  
CCGNCS DSEELPTRL

TRTRPLEQKLI SEEDLAANDILDYKDDDDKV

Tag:	C-Myc/DDK
Purity:	> 80% as determined by SDS-PAGE and Coomassie blue staining
Concentration:	>0.05 µg/µL as determined by microplate BCA method
Labeling Method:	Labeled with [U- 13C6, 15N4]-L-Arginine and [U- 13C6, 15N2]-L-Lysine
Buffer:	25 mM Tris-HCl, 100 mM glycine, pH 7.3
Storage:	Store at -80°C. Avoid repeated freeze-thaw cycles.
Stability:	Stable for 3 months from receipt of products under proper storage and handling conditions.
RefSeq:	<a href="#">NP_001004106</a>
RefSeq Size:	2930
RefSeq ORF:	1728



[View online »](#)

Synonyms: GPRK6

Locus ID: 2870

UniProt ID: [P43250](#)

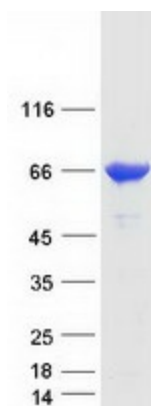
Cytogenetics: 5q35.3

**Summary:** This gene encodes a member of the guanine nucleotide-binding protein (G protein)-coupled receptor kinase subfamily of the Ser/Thr protein kinase family. The protein phosphorylates the activated forms of G protein-coupled receptors thus initiating their deactivation. Several transcript variants encoding different isoforms have been described for this gene. [provided by RefSeq, Jul 2008]

**Protein Families:** Druggable Genome, Protein Kinase

**Protein Pathways:** Chemokine signaling pathway, Endocytosis

### Product images:



Coomassie blue staining of purified GRK6 protein (Cat# [TP302464]). The protein was produced from HEK293T cells transfected with GRK6 cDNA clone (Cat# [RC202464]) using MegaTran 2.0 (Cat# [TT210002]).