

Product datasheet for PH302460

MMP1 (NM_002421) Human Mass Spec Standard

Product data:

Product Type:	Mass Spec Standards
Description:	MMP1 MS Standard C13 and N15-labeled recombinant protein (NP_002412)
Species:	Human
Expression Host:	HEK293
Expression cDNA Clone or AA Sequence:	RC202460
Predicted MW:	54 kDa
Protein Sequence:	>RC202460 protein sequence Red=Cloning site Green=Tags(s)

MHSFPPLLLLLFWGVVSHSFPATLETQEVDL VQKYLEKYYNLKNDGRQVEKRRNSGPVVEK LKQM QEF
FGLKVTGKPAETLKVMKQPRCGVPDVAQFVLTEGNPRWEQTHLYRIENYTPDLPRADVDHAIKAFQL
WSNVTPLTF TKVSEGDADIMISFVRGDHRDNSPFDGPGGNLAHAFQPGPGIGGDAHFDEDERWTNNFREY
NLHRVAAHELGHSLGLSHSTDIGALMYPSTYFSGDVQLAQDDIDGIQAIYGRSQNPVQPIGPQTPKACDS
KLTFDAITIRGEVMFFKDRFYMRNPFYPEVELNFISVFWPQLPNGLEAAAYEFADRDEVRFFKGNKYWA
VQGQNVLHGYPKDIYSSFGFPRTVKHIDAALSEENTGKTYFFVANKYWRVDEYKRSMDPGYPKMI AHDFP
GIGHKVD AVFMKDGFFYFFHGTRQYKFDPKTKRILTLQKANSWFNCRKN

TRTRPLEQKLI SEEDLAANDILDYKDDDDKV

Tag:	C-Myc/DDK
Purity:	> 80% as determined by SDS-PAGE and Coomassie blue staining
Concentration:	>0.05 µg/µL as determined by microplate BCA method
Labeling Method:	Labeled with [U- ¹³ C ₆ , ¹⁵ N ₄]-L-Arginine and [U- ¹³ C ₆ , ¹⁵ N ₂]-L-Lysine
Buffer:	25 mM Tris-HCl, 100 mM glycine, pH 7.3
Storage:	Store at -80°C. Avoid repeated freeze-thaw cycles.
Stability:	Stable for 3 months from receipt of products under proper storage and handling conditions.
RefSeq:	<u>NP_002412</u>
RefSeq Size:	2081
RefSeq ORF:	1407
Synonyms:	CLG; CLGN



[View online »](#)

Locus ID: 4312

UniProt ID: [P03956](#), [Q53G95](#)

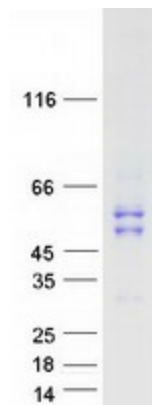
Cytogenetics: 11q22.2

Summary: This gene encodes a member of the peptidase M10 family of matrix metalloproteinases (MMPs). Proteins in this family are involved in the breakdown of extracellular matrix in normal physiological processes, such as embryonic development, reproduction, and tissue remodeling, as well as in disease processes, such as arthritis and metastasis. The encoded preproprotein is proteolytically processed to generate the mature protease. This secreted protease breaks down the interstitial collagens, including types I, II, and III. The gene is part of a cluster of MMP genes on chromosome 11. Mutations in this gene are associated with chronic obstructive pulmonary disease (COPD). Alternative splicing results in multiple transcript variants, at least one of which encodes an isoform that is proteolytically processed. [provided by RefSeq, Jan 2016]

Protein Families: Druggable Genome, Protease, Secreted Protein

Protein Pathways: Bladder cancer, Pathways in cancer, PPAR signaling pathway

Product images:



Coomassie blue staining of purified MMP1 protein (Cat# [TP302460]). The protein was produced from HEK293T cells transfected with MMP1 cDNA clone (Cat# [RC202460]) using MegaTran 2.0 (Cat# [TT210002]).