

## Product datasheet for PH302457

### CC130 (CCDC130) (NM\_030818) Human Mass Spec Standard

#### Product data:

Product Type:	Mass Spec Standards
Description:	CCDC130 MS Standard C13 and N15-labeled recombinant protein (NP_110445)
Species:	Human
Expression Host:	HEK293
Expression cDNA Clone or AA Sequence:	RC202457
Predicted MW:	44.8 kDa
Protein Sequence:	>RC202457 protein sequence Red=Cloning site Green=Tags(s)

MGERKGVNKYYPPDFNPEKHGSLNRYHNSHPLRERARKLSQGILIRFEMPYNIWCDGCKNHIGMVRYN  
AEKKKVGNYTTPIYRFRMKCHLCVNYIEMQTDPANCDYVIVSGAQRKEERWDMADNEQVLTTEHEKKQK  
LETDMFRLEHGEADRSTLKKALPTLSHIQEAQSAWKDDFALNSMLRRRFREKKKAIQEEEEERDQALQAK  
ASLTIPLVPETEDDRKLAALLKFHTLDSYEDKQKLRTEIISRSWFPSAPGSASSKVSGLKLAQSRR  
TALATSPITVGD LGIVRRRSRDVPE SPQHAADTPKSGEPRVPEEAAQDRPMSPGDCPPETTETPKCSSPR  
GQEGSRQDKPLSPAGSSQEADTPDRHPCSLGSSLVADYSDSESE

TRTRPLEQKLI SEEDLAANDILDYKDDDDKV

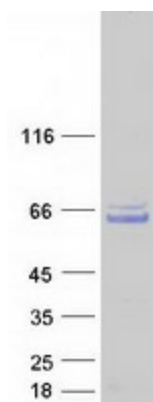
Tag:	C-Myc/DDK
Purity:	> 80% as determined by SDS-PAGE and Coomassie blue staining
Concentration:	>0.05 µg/µL as determined by microplate BCA method
Labeling Method:	Labeled with [U- <sup>13</sup> C <sub>6</sub> , <sup>15</sup> N <sub>4</sub> ]-L-Arginine and [U- <sup>13</sup> C <sub>6</sub> , <sup>15</sup> N <sub>2</sub> ]-L-Lysine
Buffer:	25 mM Tris-HCl, 100 mM glycine, pH 7.3
Storage:	Store at -80°C. Avoid repeated freeze-thaw cycles.
Stability:	Stable for 3 months from receipt of products under proper storage and handling conditions.
RefSeq:	<a href="#">NP_110445</a>
RefSeq Size:	1679
RefSeq ORF:	1188
Locus ID:	81576
UniProt ID:	<a href="#">P13994</a>



[View online »](#)

Cytogenetics: 19p13.13

### Product images:



Coomassie blue staining of purified CCDC130 protein (Cat# [TP302457]). The protein was produced from HEK293T cells transfected with CCDC130 cDNA clone (Cat# [RC202457]) using MegaTran 2.0 (Cat# [TT210002]).