

Product datasheet for PH302436

CK1 epsilon (CSNK1E) (NM_152221) Human Mass Spec Standard

Product data:

Product Type:	Mass Spec Standards
Description:	CSNK1E MS Standard C13 and N15-labeled recombinant protein (NP_689407)
Species:	Human
Expression Host:	HEK293
Expression cDNA Clone or AA Sequence:	RC202436
Predicted MW:	47.3 kDa
Protein Sequence:	>RC202436 protein sequence Red=Cloning site Green=Tags(s)

MELRVGNKYRLGRKIGSGSFGDIYLGANIASGEEVAIKLECVKTKHPQLHIESKFYKMMQGGVGIPIKWC
CGAEGDYNVMVMEELLGPSLEDLNFCSRKFSKLTVLLADQMISRIEYIHSKNFIHRDVKPDNFLMGLGK
KGNLVYIIDFGLAKKYRDARTHQHIPPYRENKLTGTARYASINTHLGIEQSRRDDLESGLYVLMYFNLGS
LPWQGLKAATKRQKYERISEKKMSTPIEVLCKGYPSEFSTYLNFCRSLRFDDKPDYSYLRQLFRNLFHRQ
GFSYDYVFDWNMLKFGAARNPEDVDRERREHEREERMQLRGSATRALPPGPPTGATANRLRSAAEPVAS
TPASRIQPAGNTSPRAISRVDREKRVSMRLHRGAPANVSSDLTGRQEVSRIPASQTSVFPDHLGK

TRTRPLEQKLISEEDLAANDILDYKDDDDKV

Tag:	C-Myc/DDK
Purity:	> 80% as determined by SDS-PAGE and Coomassie blue staining
Concentration:	>0.05 µg/µL as determined by microplate BCA method
Labeling Method:	Labeled with [U- ¹³ C ₆ , ¹⁵ N ₄]-L-Arginine and [U- ¹³ C ₆ , ¹⁵ N ₂]-L-Lysine
Buffer:	25 mM Tris-HCl, 100 mM glycine, pH 7.3
Storage:	Store at -80°C. Avoid repeated freeze-thaw cycles.
Stability:	Stable for 3 months from receipt of products under proper storage and handling conditions.
RefSeq:	<u>NP_689407</u>
RefSeq Size:	2820
RefSeq ORF:	1248
Synonyms:	CK1ε; CK1epsilon; HCK1E
Locus ID:	1454



[View online »](#)

UniProt ID: [P49674](#), [Q5U045](#)

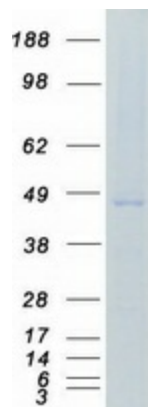
Cytogenetics: 22q13.1

Summary: The protein encoded by this gene is a serine/threonine protein kinase and a member of the casein kinase I protein family, whose members have been implicated in the control of cytoplasmic and nuclear processes, including DNA replication and repair. The encoded protein is found in the cytoplasm as a monomer and can phosphorylate a variety of proteins, including itself. This protein has been shown to phosphorylate period, a circadian rhythm protein. Two transcript variants encoding the same protein have been found for this gene. [provided by RefSeq, Feb 2014]

Protein Families: Druggable Genome, Protein Kinase

Protein Pathways: Circadian rhythm - mammal, Hedgehog signaling pathway, Wnt signaling pathway

Product images:



Coomassie blue staining of purified CSNK1E protein (Cat# [TP302436]). The protein was produced from HEK293T cells transfected with CSNK1E cDNA clone (Cat# [RC202436]) using MegaTran 2.0 (Cat# [TT210002]).