

Product datasheet for PH302435

CSNK2A2 (NM_001896) Human Mass Spec Standard

Product data:

Product Type:	Mass Spec Standards
Description:	CSNK2A2 MS Standard C13 and N15-labeled recombinant protein (NP_001887)
Species:	Human
Expression Host:	HEK293
Expression cDNA Clone or AA Sequence:	RC202435
Predicted MW:	41.2 kDa
Protein Sequence:	>RC202435 protein sequence Red=Cloning site Green=Tags(s) MPGPAAGSRARVYAEVNSLRSREYWDYEAHVPSWGNQDDYQLVRKLGKGYSEVFEAINITNNERVVVKI LKPVKKKIKREVKILENLRGGTNIKLIIDTVKDPVSKTPALVFEYINNTDFKQLYQILTDFDIRFYMYE LLKALDYCHSKGIMHRDVKPHNVMIDHQKQLRLIDWGLAEFYHPAQEYNVRVASRYFKGPPELLVDYQMY DYSLDMWSLGCMLASMIFRREPFHFGQDNYDQLVRIAKVLGTEELYGYLKKYHIDLDPHFNDILGQHSRK RWENFIHSENRHLVSPEALDLLDKLLRYDHQQLTAKEAMEHPYFYPVVKEQSQPCADNAVLSSGLTAAR TRTRPLEQKLI SEEDLAANDILDYKDDDDKV
Tag:	C-Myc/DDK
Purity:	> 80% as determined by SDS-PAGE and Coomassie blue staining
Concentration:	>0.05 µg/µL as determined by microplate BCA method
Labeling Method:	Labeled with [U- ¹³ C ₆ , ¹⁵ N ₄]-L-Arginine and [U- ¹³ C ₆ , ¹⁵ N ₂]-L-Lysine
Buffer:	25 mM Tris-HCl, 100 mM glycine, pH 7.3
Storage:	Store at -80°C. Avoid repeated freeze-thaw cycles.
Stability:	Stable for 3 months from receipt of products under proper storage and handling conditions.
RefSeq:	<u>NP_001887</u>
RefSeq Size:	1674
RefSeq ORF:	1050
Synonyms:	CK2A2; CK2alpha'; CSNK2A1
Locus ID:	1459



[View online »](#)

UniProt ID: [P19784](#)

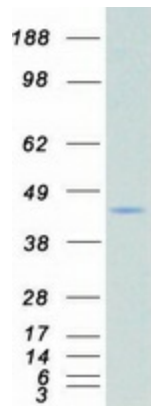
Cytogenetics: 16q21

Summary: This gene encodes the alpha', or alpha 2, catalytic subunit of the protein kinase enzyme, casein kinase 2 (CK2). Casein kinase 2 is a serine/threonine protein kinase that phosphorylates acidic proteins such as casein. It is involved in various cellular processes, including cell cycle control, apoptosis, and circadian rhythms. This heterotetrameric kinase includes two catalytic subunits, either alpha or alpha', and two regulatory beta subunits. The closely related gene paralog encoding the alpha, or alpha 1 subunit (CSNK2A1, Gene ID: 1457) is found on chromosome 20. An intronic variant in this gene (alpha 2) may be associated with leukocyte telomere length in a South Asian population. A related transcribed pseudogene is found on chromosome 11. [provided by RefSeq, Aug 2017]

Protein Families: Druggable Genome, Protein Kinase

Protein Pathways: Adherens junction, Tight junction, Wnt signaling pathway

Product images:



Coomassie blue staining of purified CSNK2A2 protein (Cat# [TP302435]). The protein was produced from HEK293T cells transfected with CSNK2A2 cDNA clone (Cat# [RC202435]) using MegaTran 2.0 (Cat# [TT210002]).