

Product datasheet for PH302430

RGS16 (NM_002928) Human Mass Spec Standard

Product data:

Product Type:	Mass Spec Standards
Description:	RGS16 MS Standard C13 and N15-labeled recombinant protein (NP_002919)
Species:	Human
Expression Host:	HEK293
Expression cDNA Clone or AA Sequence:	RC202430
Predicted MW:	22.8 kDa
Protein Sequence:	>RC202430 protein sequence Red=Cloning site Green=Tags(s) MCRTLAAFPTTCLERAKEFKTRLGIFLHKSELGCDTGSTGKFEWGSKHSKENRNFSEDLVWRESFDLLL SSKNGVAAFHAFKTEFSEENLEFWLACEEFKKIRSATKLASRAHQIFEEFICSEAPKEVNIDHETRELT RMNLQTATATCFDAAQGKTRTLMEKDSYPRFLKSPAYRDLAAQASAASATLSSCSLDEPSHT TRTRPLEQKLISEEDLAANDILDYKDDDDKV
Tag:	C-Myc/DDK
Purity:	> 80% as determined by SDS-PAGE and Coomassie blue staining
Concentration:	>0.05 µg/µL as determined by microplate BCA method
Labeling Method:	Labeled with [U- ¹³ C ₆ , ¹⁵ N ₄]-L-Arginine and [U- ¹³ C ₆ , ¹⁵ N ₂]-L-Lysine
Buffer:	25 mM Tris-HCl, 100 mM glycine, pH 7.3
Storage:	Store at -80°C. Avoid repeated freeze-thaw cycles.
Stability:	Stable for 3 months from receipt of products under proper storage and handling conditions.
RefSeq:	NP_002919
RefSeq Size:	2432
RefSeq ORF:	606
Synonyms:	A28-RGS14; A28-RGS14P; RGS-R
Locus ID:	6004
UniProt ID:	O15492



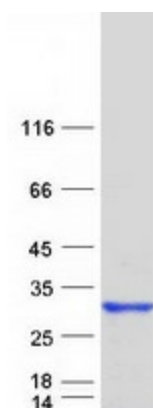
[View online »](#)

Cytogenetics: 1q25.3

Summary: The protein encoded by this gene belongs to the 'regulator of G protein signaling' family. It inhibits signal transduction by increasing the GTPase activity of G protein alpha subunits. It also may play a role in regulating the kinetics of signaling in the phototransduction cascade. [provided by RefSeq, Jul 2008]

Protein Families: Druggable Genome

Product images:



Coomassie blue staining of purified RGS16 protein (Cat# [TP302430]). The protein was produced from HEK293T cells transfected with RGS16 cDNA clone (Cat# [RC202430]) using MegaTran 2.0 (Cat# [TT210002]).