

Product datasheet for PH302418

TRAF1 (NM_005658) Human Mass Spec Standard

Product data:

Product Type:	Mass Spec Standards
Description:	TRAF1 MS Standard C13 and N15-labeled recombinant protein (NP_005649)
Species:	Human
Expression Host:	HEK293
Expression cDNA Clone or AA Sequence:	RC202418
Predicted MW:	46.2 kDa
Protein Sequence:	>RC202418 protein sequence Red=Cloning site Green=Tags(s)

MASSSGSSPRPAPDENEFFPGPPTVCQDPKEPRALCCAGCLSENPRNGEDQICPKCRGEDLQSI SPGSR
LRTQEKAHPEVAEAGIGCPFAGVGCSEFKGSPQSVQEHEVTSQTSHLNLLLGFMKQWKARLGCGLESGPMA
LEQNLSDLQLQAAVEVAGDLEVDCYRAPSSESQEELALQHFMEKLLAELEGKLRVFENIVAVLNKEVEA
SHLALATSIHQSQLDRERILSLEQRVVELQQT LAQKDQALGKLEQSLRLMEEASFDTFLWKITNVTRRC
HESACGRVSLFSPA FYTAKYGYKLCLRLYLNGDGTGKRTHLSL FIVIMRGEYDALLPWPFRNKVTFMLL
DQNNREHAIDAFRPDLSSASFQRPQSETNVASGCPLFFPLSKLQSPKHAYVKDDTMFLKIVETST

TRTRPLEQKLI SEEDLAANDILDYKDDDDKV

Tag:	C-Myc/DDK
Purity:	> 80% as determined by SDS-PAGE and Coomassie blue staining
Concentration:	>0.05 µg/µL as determined by microplate BCA method
Labeling Method:	Labeled with [U- ¹³ C ₆ , ¹⁵ N ₄]-L-Arginine and [U- ¹³ C ₆ , ¹⁵ N ₂]-L-Lysine
Buffer:	25 mM Tris-HCl, 100 mM glycine, pH 7.3
Storage:	Store at -80°C. Avoid repeated freeze-thaw cycles.
Stability:	Stable for 3 months from receipt of products under proper storage and handling conditions.
RefSeq:	<u>NP_005649</u>
RefSeq Size:	4450
RefSeq ORF:	1248
Synonyms:	EBI6; MGC:10353
Locus ID:	7185



[View online »](#)

UniProt ID: [Q13077](#)

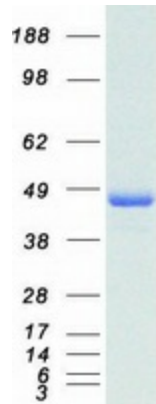
Cytogenetics: 9q33.2

Summary: The protein encoded by this gene is a member of the TNF receptor (TNFR) associated factor (TRAF) protein family. TRAF proteins associate with, and mediate the signal transduction from various receptors of the TNFR superfamily. This protein and TRAF2 form a heterodimeric complex, which is required for TNF-alpha-mediated activation of MAPK8/JNK and NF-kappaB. The protein complex formed by this protein and TRAF2 also interacts with inhibitor-of-apoptosis proteins (IAPs), and thus mediates the anti-apoptotic signals from TNF receptors. The expression of this protein can be induced by Epstein-Barr virus (EBV). EBV infection membrane protein 1 (LMP1) is found to interact with this and other TRAF proteins; this interaction is thought to link LMP1-mediated B lymphocyte transformation to the signal transduction from TNFR family receptors. Three transcript variants encoding two different isoforms have been found for this gene. [provided by RefSeq, Jul 2010]

Protein Families: Druggable Genome

Protein Pathways: Pathways in cancer, Small cell lung cancer

Product images:



Coomassie blue staining of purified TRAF1 protein (Cat# [TP302418]). The protein was produced from HEK293T cells transfected with TRAF1 cDNA clone (Cat# [RC202418]) using MegaTran 2.0 (Cat# [TT210002]).