

Product datasheet for PH302408

TRAP alpha (SSR1) (NM_003144) Human Mass Spec Standard

Product data:

| | |
|---------------------------------------|---|
| Product Type: | Mass Spec Standards |
| Description: | SSR1 MS Standard C13 and N15-labeled recombinant protein (NP_003135) |
| Species: | Human |
| Expression Host: | HEK293 |
| Expression cDNA Clone or AA Sequence: | RC202408 |
| Predicted MW: | 32.2 kDa |
| Protein Sequence: | >RC202408 protein sequence Red=Cloning site Green=Tags(s) |
| | <p>MRLLPRLLLLLLVFPATVLFRRGPRGLLAVAQDLTEDEETVEDSIIIEDEDEAEVEEDEPTDLVEDKEE EDVSGEPEASPSADTTILFVKGEDFPANNIVKFLVGFTNKGTEDFIVESLDASFRYPQDYQFYIQNFTAL PLNTVVPPQRQATFEYSFIPAEPMGRRPFLVINLNYKDLNNGVFDQAVFNQTVTVIEREDGLDGETIFM YMFLAGLGLLVI VGLHQLLESKRKRPIQKVMGTSSQNDVMSWIPQETLNQINKASPRRLPRKRAQKR SVGSDE</p> <p>TRTRPLEQKLI SEEDLAANDILDYKDDDDKV</p> |
| Tag: | C-Myc/DDK |
| Purity: | > 80% as determined by SDS-PAGE and Coomassie blue staining |
| Concentration: | >0.05 µg/µL as determined by microplate BCA method |
| Labeling Method: | Labeled with [U- ¹³ C ₆ , ¹⁵ N ₄]-L-Arginine and [U- ¹³ C ₆ , ¹⁵ N ₂]-L-Lysine |
| Buffer: | 25 mM Tris-HCl, 100 mM glycine, pH 7.3 |
| Storage: | Store at -80°C. Avoid repeated freeze-thaw cycles. |
| Stability: | Stable for 3 months from receipt of products under proper storage and handling conditions. |
| RefSeq: | <u>NP_003135</u> |
| RefSeq Size: | 9793 |
| RefSeq ORF: | 858 |
| Synonyms: | TRAPA |
| Locus ID: | 6745 |



[View online »](#)

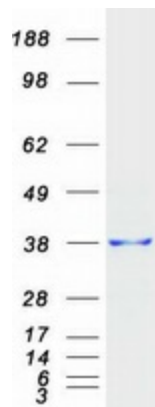
UniProt ID: [P43307](#)

Cytogenetics: 6p24.3

Summary: The signal sequence receptor (SSR) is a glycosylated endoplasmic reticulum (ER) membrane receptor associated with protein translocation across the ER membrane. The SSR consists of 2 subunits, a 34-kD glycoprotein encoded by this gene and a 22-kD glycoprotein. This gene generates several mRNA species as a result of complex alternative polyadenylation. This gene is unusual in that it utilizes arrays of polyA signal sequences that are mostly non-canonical. Multiple transcript variants encoding different isoforms have been found for this gene. [provided by RefSeq, May 2014]

Protein Families: Druggable Genome, Transmembrane

Product images:



Coomassie blue staining of purified SSR1 protein (Cat# [TP302408]). The protein was produced from HEK293T cells transfected with SSR1 cDNA clone (Cat# [RC202408]) using MegaTran 2.0 (Cat# [TT210002]).