

Product datasheet for PH302405

Prostaglandin E Synthase (PTGES) (NM_004878) Human Mass Spec Standard

Product data:

Product Type:	Mass Spec Standards
Description:	PTGES MS Standard C13 and N15-labeled recombinant protein (NP_004869)
Species:	Human
Expression Host:	HEK293
Expression cDNA Clone or AA Sequence:	RC202405
Predicted MW:	17.1 kDa
Protein Sequence:	>RC202405 protein sequence Red=Cloning site Green=Tags(s) MPAHSVMSSPALPAFLLCSTLLVIKMYVVAIITGQVRLRKKAFANPEDALRHGGPQYCRSDPDVERCLR AHRNDMETIYPFLFLGFVYSFLGPNPFVAMHFLVFLVGRVAHTVAYLGKLRAPIRSVTYTLAQLPCASM ALQILWEAARHL TRTRPLEQKLI SEEDLAANDILDYKDDDDKV
Tag:	C-Myc/DDK
Purity:	> 80% as determined by SDS-PAGE and Coomassie blue staining
Concentration:	>0.05 µg/µL as determined by microplate BCA method
Labeling Method:	Labeled with [U- 13C6, 15N4]-L-Arginine and [U- 13C6, 15N2]-L-Lysine
Buffer:	25 mM Tris-HCl, 100 mM glycine, pH 7.3
Storage:	Store at -80°C. Avoid repeated freeze-thaw cycles.
Stability:	Stable for 3 months from receipt of products under proper storage and handling conditions.
RefSeq:	NP_004869
RefSeq Size:	1787
RefSeq ORF:	456
Synonyms:	MGST-IV; MGST1-L1; MGST1L1; MPGES; mPGES-1; PGES; PIG12; PP102; PP1294; TP53112
Locus ID:	9536
UniProt ID:	O14684



[View online »](#)

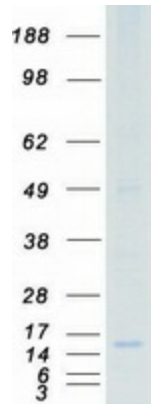
Cytogenetics: 9q34.11

Summary: The protein encoded by this gene is a glutathione-dependent prostaglandin E synthase. The expression of this gene has been shown to be induced by proinflammatory cytokine interleukin 1 beta (IL1B). Its expression can also be induced by tumor suppressor protein TP53, and may be involved in TP53 induced apoptosis. Knockout studies in mice suggest that this gene may contribute to the pathogenesis of collagen-induced arthritis and mediate acute pain during inflammatory responses. [provided by RefSeq, Jul 2008]

Protein Families: Druggable Genome, Transmembrane

Protein Pathways: Arachidonic acid metabolism, Metabolic pathways

Product images:



Coomassie blue staining of purified PTGES protein (Cat# [TP302405]). The protein was produced from HEK293T cells transfected with PTGES cDNA clone (Cat# [RC202405]) using MegaTran 2.0 (Cat# [TT210002]).