

Product datasheet for PH302399

SSH3 (NM_017857) Human Mass Spec Standard

Product data:

Product Type:	Mass Spec Standards
Description:	SSH3 MS Standard C13 and N15-labeled recombinant protein (NP_060327)
Species:	Human
Expression Host:	HEK293
Expression cDNA Clone or AA Sequence:	RC202399
Predicted MW:	73 kDa
Protein Sequence:	>RC202399 protein sequence Red=Cloning site Green=Tags(s)

MALVTVSRSPPGSGASTPVGPDQAVQRRSRLQRRQSFVLRGAVLGLQDGGDNDAAEASSEPTEKAPS
EEELHGDQTDGQGSQSPQKQEEQRQHLHLMVQLLRPQDDIRLAAQLEAPRPPRLRYLLVVSTREGELS
QDETVLLGVDFPDSSPCTLGLVPLWSDTQVYLDGGGFSVTSGGQSRIFKPIISIQTMWATLQVLHQA
CEAALGSGLVPGGSALTWASHYQERLNSEQSCLNEWAMADLESLRPPSAEPGGSSEQEQMEQAIRAELW
KVLDVSDLESVTSKEIRQALELRLGLPLQYRDFIDNQMLLLVAQRDRASRIFPHLYLGSEWNAANLEEL
QRNRVTHILNMAREIDNFYPERFTYHNVRLWDEESAQLLPHWKETHRFIEAARAQGTHVLVHCKMGVSRS
AATVLAYAMKQYECSEALRHVQELRPIARPNGFLRQLQIYQGILTASRQSHVWEQKVGVSPEEHPA
PEVSTPFPPPLPPEPEGGGEEKVVGMEESQAAPKEEPGPRPRINLRGVMRSISLLEPSLELESTSETSDMP
EVFSSHESSHEEPLQPFPLARTKGGQQVDRGPQFALKSRQSVVTLQGSAYVANRTQAFQEQEQQGQGGQ
GEPICISSTPRFRKVVVRQASVHDSGEEGEA

TRTRPLEQKLISEEDLAANDILDYKDDDDKV

Tag:	C-Myc/DDK
Purity:	> 80% as determined by SDS-PAGE and Coomassie blue staining
Concentration:	>0.05 µg/µL as determined by microplate BCA method
Labeling Method:	Labeled with [U- 13C6, 15N4]-L-Arginine and [U- 13C6, 15N2]-L-Lysine
Buffer:	25 mM Tris-HCl, 100 mM glycine, pH 7.3
Storage:	Store at -80°C. Avoid repeated freeze-thaw cycles.
Stability:	Stable for 3 months from receipt of products under proper storage and handling conditions.
RefSeq:	<u>NP_060327</u>
RefSeq Size:	2894



[View online »](#)

RefSeq ORF: 1977

Synonyms: SSH3L

Locus ID: 54961

UniProt ID: [Q8TE77](#), [A0A024R5J4](#)

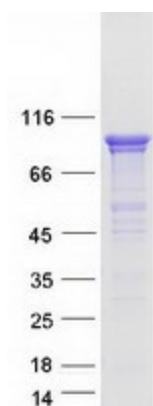
Cytogenetics: 11q13.2

Summary: The ADF (actin-depolymerizing factor)/cofilin family (see MIM 601442) is composed of stimulus-responsive mediators of actin dynamics. ADF/cofilin proteins are inactivated by kinases such as LIM domain kinase-1 (LIMK1; MIM 601329). The SSH family appears to play a role in actin dynamics by reactivating ADF/cofilin proteins in vivo (Niwa et al., 2002 [PubMed 11832213]).[supplied by OMIM, Mar 2008]

Protein Families: Druggable Genome, Phosphatase

Protein Pathways: Regulation of actin cytoskeleton

Product images:



Coomassie blue staining of purified SSH3 protein (Cat# [TP302399]). The protein was produced from HEK293T cells transfected with SSH3 cDNA clone (Cat# [RC202399]) using MegaTran 2.0 (Cat# [TT210002]).